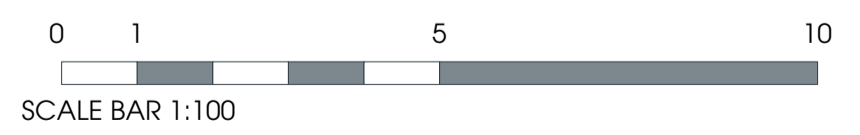
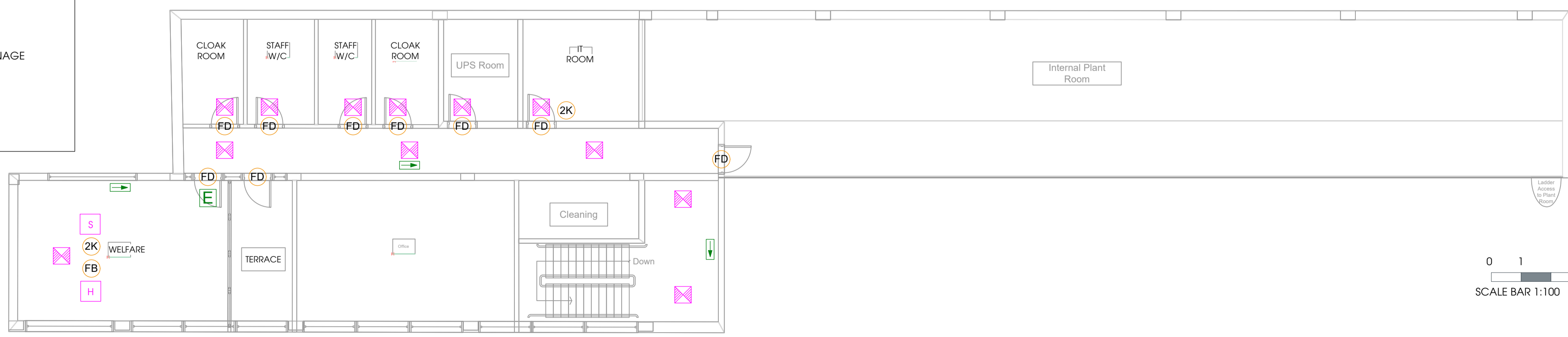


KEY

6F	6LTR. FOAM FIRE EXTINGUISHER	EMERGENCY LIGHT	
2K	2KG CO2 FIRE EXTINGUISHER	EMERGENCY EXIT ILLUMINATED SIGN	
FA	FIRE ALARM PANEL	FD	FIRE DOOR & KEEP SHUT SIGN
H	HEAT DETECTOR	Push Bar	PUSH BAR TO OPEN SIGNAGE
S	SMOKE DETECTOR	Fire Exit Sign	FIRE EXIT DIRECTIONAL SIGNAGE
Warning Bell	WARNING DEVICE BELL	FB	4X4 FIRE BLANKET
Warning Visual	WARNING DEVICE VISUAL - POSITIONED IN ACCORDANCE WITH BS5839-1:2025	EN3	EN3 EXTINGUISHER SIGNAGE
Warning Sounder	WARNING DEVICE SOUNDER - POSITIONED IN ACCORDANCE WITH BS5839-1:2025	Fire Action Sign	'FIRE ACTION' SIGNAGE
Call Point	CALL POINT		

First Floor



client
 Lidl GB Ltd

project
Blackpool Squires Gate

drawing title
Proposed Licensing Floor Plan

date January 2026

status Licensing

scale 1:100 @ A1

drawn KE checked MH

job no. 4275 dwg no. LP101 rev.

htcarchitects

York Place Studio
 8 Britannia Street
 Leeds
 LS1 2DZ
 T: (0113) 244 3457
 W: www.htcarchitects.co.uk
 E: info@htcarchitects.co.uk