



# Fylde Outdoor Education Pack

Using parks & coast to deliver the national curriculum



## Introduction

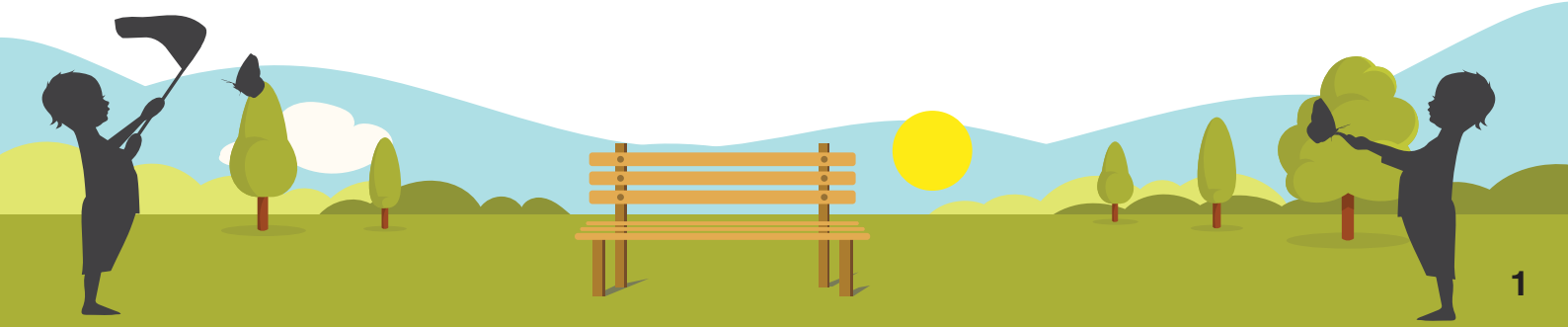
Fylde's coast, countryside and green spaces are a valuable educational resource that can support a wide range of curriculum activities. They offer a diverse and unique range of natural environments for students to learn and be inspired within. This includes beautiful woodlands, beaches and dunes and formal parks.

Outdoor learning activities provide challenges and opportunities beyond that found in the classroom or school grounds. The benefits of outdoor learning has long been known and appreciated. Engaging activities and interactive learning provides students with a whole new method of learning, which allows them to

develop through real life experiences, trial and error, engagement of senses and all round getting hands dirty.

## Fylde's Outdoor Education Partnership

Fylde's outdoor education pack has been developed and produced by Fylde Council in partnership with the Lancashire Wildlife Trust, Park View 4U and the RSPB. Each organisation is working together to make the Fylde borough as accessible and exciting as possible for education providers. Whilst each organisation offers its own individual sessions within respective areas of the Fylde borough, we have also combined expertise and resources to create brand new sessions.



## Our Offer:

- A broad range of natural environments including woodland, sand dunes, beaches, salt marsh and formal parkland.
- Strong collaborations between environmental education partners including Fylde Council's Ranger Service, Lancashire Wildlife Trust, Park View 4U and the RSPB. You can be assured that all sessions and activities will combine each organisation's knowledge, resources and expertise.
- Ranger School sessions can be entirely bespoke regarding activity, location and duration. Sessions can be run within school grounds or in any Fylde open space.
- All sessions and host sites are fully risk assessed for the safety of pupils.
- We work with all ages, abilities and key stages to ensure an enjoyable and fulfilled learning experience.
- Activities are linked to the National Curriculum and can enhance schools scheme of work and classroom learning.
- Nationally accredited and acknowledged Forest and Beach School sessions can be delivered by fully qualified and experienced staff.
- We aim to promote citizenship, sustainability, appreciation and understanding of nature and wildlife at all times.
- Fylde's national Green Flag Award winning parks provide a beautiful, safe and well equipped environment for outdoor learning.
- Opportunities for sessions to contribute towards sections of the Duke of Edinburgh's Award Scheme, John Muir award and various Scout and Brownie badges.

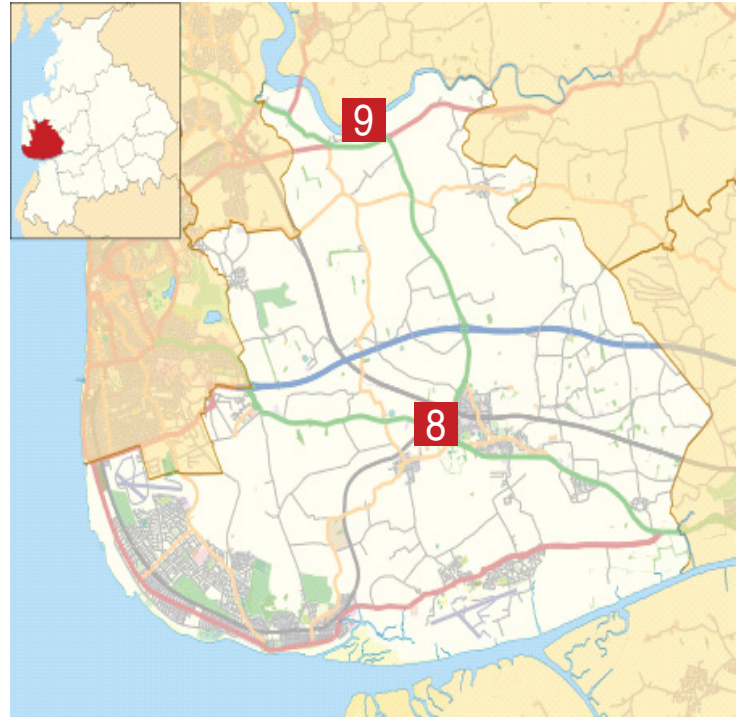


# Fylde Council Ranger Service

Fylde Council's Ranger Service can accommodate both school field visits to one of Fylde's fabulous open spaces or come to your school.

We can undertake bespoke environmental sessions, assembly talks as well as after school clubs. We undertake tailor made outdoor education sessions on formal parklands such as Ashton Gardens, Lowther Gardens and Fairhaven Lake as well as on the coast and the Ribble Estuary.

The duration of each session is flexible depending on your requirements, although most run from two hours up to a full day. Our Rangers can assist you in designing and selecting suitable activities to facilitate the learning outcomes for your school.



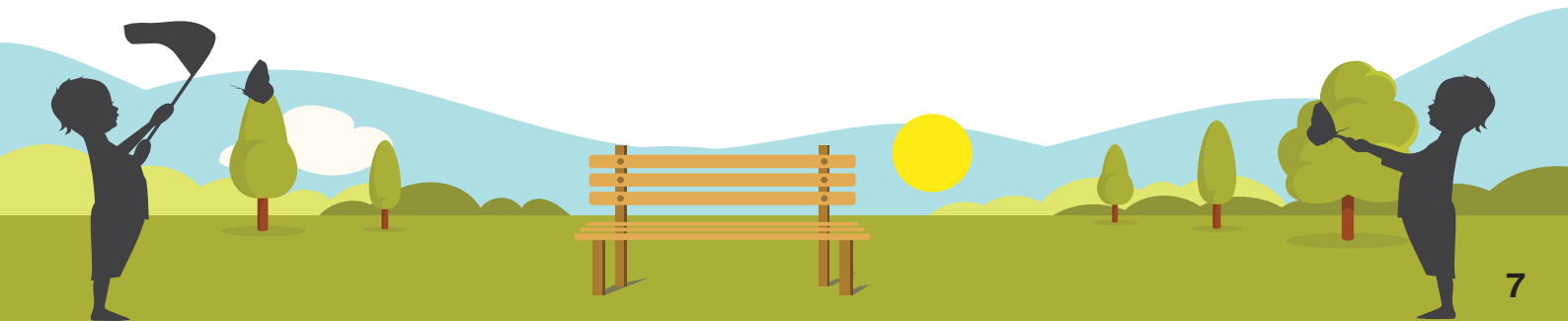
1 Fylde Sand Dunes & Lytham St Annes Local Nature Reserve	2 Ashton Gardens, (Clifton Drive North FY8 2AW)
3 Fylde Coastline & Ribble Estuary	4 Fairhaven Lake & Gardens, (Inner Promenade FY8 1BD)
5 Lowther Gardens, (Lowther Terrace FY8 5QQ)	6 Lytham Hall, (Ballam Road FY8 4JX)
7 Park View 4u, (Park View Road FY8 4JE)	8 On Site School Visits, (Borough Wide)
9 River Wyre	

Please use this key as a guide to locating areas of education on the map below\*



\*This map is for guidance only, some streets may be missing and these are approximate positions\*

Activity Themes	Key Stage	National Curriculum Link
<h2 data-bbox="130 383 528 427">Wonderful Woodland</h2> <ul data-bbox="119 450 614 958" style="list-style-type: none"> <li>• What is a woodland?</li> <li>• Signs of the season – take a look at seasonal changes within a woodland</li> <li>• Plant and tree identification</li> <li>• Tree planting: learn how to plant a tree properly to ensure its survival</li> <li>• Soil studies: look at what happens below the ground</li> <li>• Introduction to woodland biodiversity</li> <li>• Survey skills</li> <li>• Decay and deadwood</li> </ul>	<p data-bbox="778 439 911 472">KS1, 2, 3, 4</p>	<ul data-bbox="1098 439 1358 824" style="list-style-type: none"> <li>• Working Scientifically</li> <li>• Biology</li> <li>• Plants</li> <li>• Animals</li> <li>• Living Things/Habitats</li> <li>• Art</li> <li>• Physical Geography</li> <li>• Seasonal Changes</li> <li>• Evolution &amp; Adaption</li> <li>• PSHE</li> </ul>
<h2 data-bbox="137 1032 491 1077">Rivers &amp; Estuaries</h2> <ul data-bbox="119 1099 646 1529" style="list-style-type: none"> <li>• Evaluation of the course of a river, from source to mouth including features along the way</li> <li>• Identification of associated river environments, e.g. mud flat, salt marsh, flood plain. What makes them specialised?</li> <li>• Key river processes – how they shape the land.</li> <li>• Why do rivers rise and fall? – Influence of tides, weather, groundwater</li> <li>• Rivers as resources</li> <li>• The role rivers play in the water cycle</li> </ul>	<p data-bbox="778 1088 935 1122">KS 2, 3, 4 &amp; 5</p>	<ul data-bbox="1098 1088 1358 1357" style="list-style-type: none"> <li>• Working Scientifically</li> <li>• Biology</li> <li>• Living Things/Habitats</li> <li>• Physical Geography</li> <li>• Plants</li> <li>• Animals</li> <li>• PSHE</li> </ul>



## Typical Offsite Visits On Arrival

You will be greeted by a Ranger who will take you to a designated area or base within the park where you can store packed lunches, bags and coats. The Ranger will then give a short introductory talk including staff introductions, health and safety, behaviour and an explanation of the day.

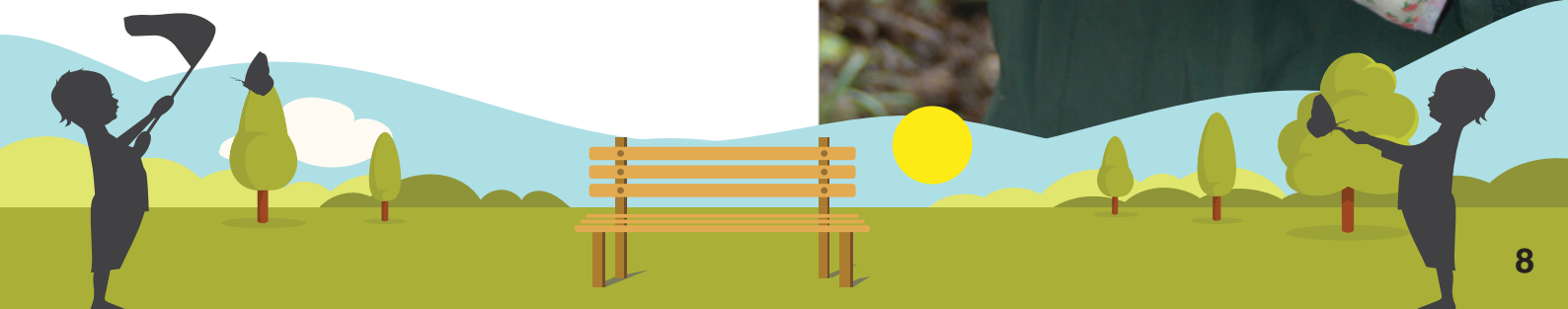
## Outdoor Learning Activities

**Half day visit:** This session typically lasts 2 hours in the morning or an afternoon and will be tailored to provide adequate time for pupils to complete the chosen activities.

**Full day visit:** The morning session will typically start at 10.00am and last 2 hours, followed by a lunch break before the final 2 hour afternoon session. Exact times can be arranged to suit.

## Departure

On departure from site please ensure all belongings have been collected. We will assist in carrying out final checks before asking teachers for feedback via our electronic survey. Feedback is very important to us, so please take the time to fill it in.



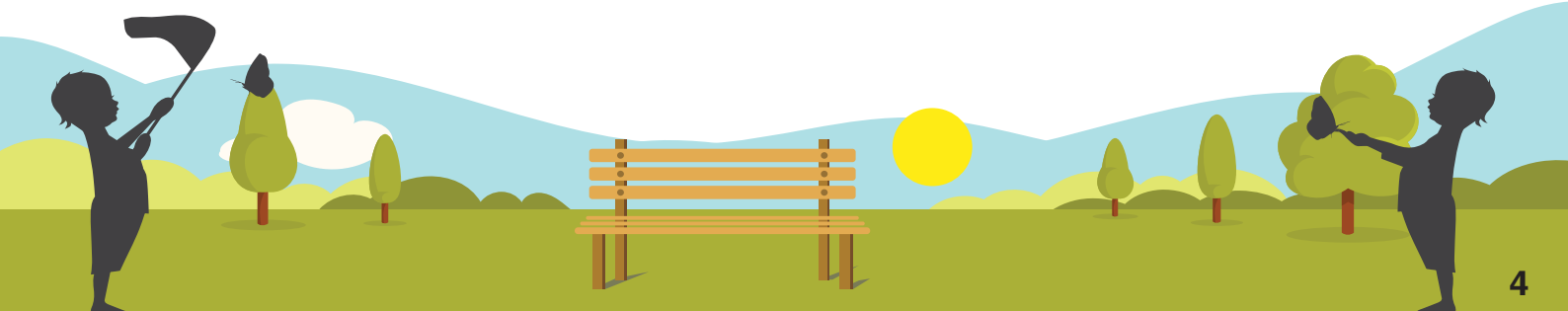


## What We Offer

- Qualified and experienced Rangers who will plan and lead all activities
- Teacher designed interactive and engaging learning experiences
- Bespoke sessions regarding content, location and duration
- All learning resources, equipment and materials
- Safe and controlled access to a range of outdoor spaces their facilities
- Health and safety information and risk assessment summary

The activities in this pack have been designed by qualified teachers to enhance learning around the primary and secondary national curriculum. Activities focus on scientific enquiry, allowing pupils to explore and raise their own questions and to broaden their scientific view of the world.

Field skills include using equipment safely and correctly, collecting and recording data, analysis and communication, species identification, classification and sorting. Older pupils can also develop a greater understanding of a wide range of scientific and geographic principles and concepts.



## Ranger School

The aim of Ranger School is to engage and educate young people in conservation and the local environment using Fylde's open spaces.

Ranger School delivers:

- School based activities and learning opportunities throughout the year
- School assemblies, school garden development and after school club activities
- Activities into the schools local countryside or parish, exploring the natural world
- Activities within parks including Ashton Gardens, Fairhaven Lake and Lowther Gardens
- Activities on ecological sites including Green Drive Woodland, Fylde Sand Dunes, River Wyre and Ribble Estuary
- Activities that cater for SEND pupils - please provide any specific needs and details.

Ranger School delivers activities linked with five main environmental themes as identified within the illustrated table.

All activities link with the national curriculum and schools can book a single session to supplement a current classroom topic or book a series of sessions over a longer period.

If you choose to complete all five workshops then students will graduate as Junior Rangers and will receive a certificate and badge.

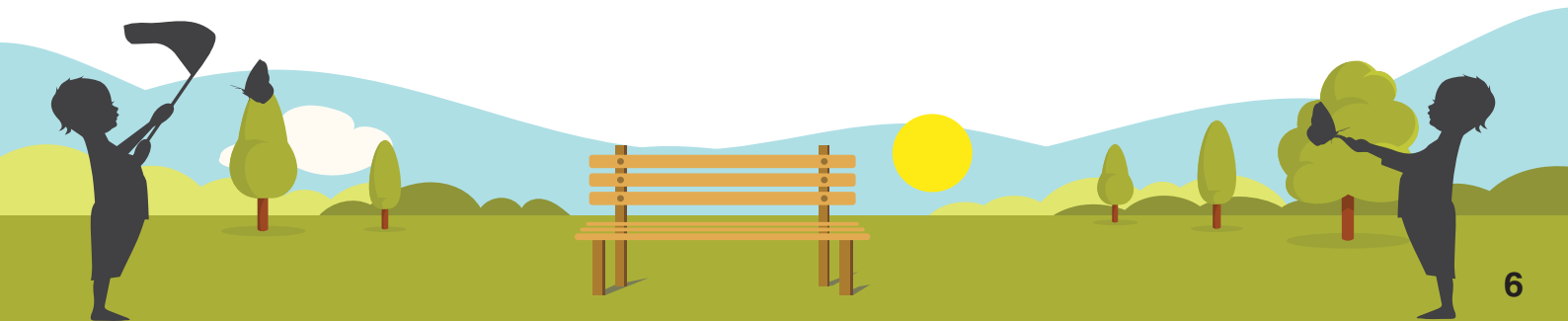
Junior Rangers then have the opportunity to progress to Advanced Ranger School by working alongside Rangers in school or within the local community.

This could include assisting with real life environmental issues and practical conservation projects such as the Fylde's Sand Dune Project, working with the Lancashire Wildlife Trust and the RSPB.





Activity Themes	Key Stage	National Curriculum Link
<h2>Super Survival</h2> <ul style="list-style-type: none"> <li>• Outdoor skills including orienteering, map and compass reading</li> <li>• Green activities and games</li> <li>• Ranger led historical or nature walks at a chosen location: increasing knowledge and understanding of the local environment</li> <li>• Bush craft skills: learn how to build shelters, find food, clean water, light fires</li> </ul>	<p>KS 2, 3, 4 &amp; 5</p>	<ul style="list-style-type: none"> <li>• Working Scientifically</li> <li>• Maths/Measurement</li> <li>• Maths/Geometry</li> <li>• Biology</li> <li>• Art</li> <li>• Physical Geography</li> <li>• PSHE</li> </ul>
<h2>Exciting Ecology</h2> <ul style="list-style-type: none"> <li>• Identification of local environments and habitats</li> <li>• Introduction to ecosystems, life processes and cycles</li> <li>• Introduction to food chains, food webs and life cycles</li> <li>• Plant anatomy and physiology</li> <li>• Species ID and survey skills</li> <li>• Mini beast hunts and making bug hotels</li> </ul>	<p>KS 1, 2, 3, 4</p>	<ul style="list-style-type: none"> <li>• Working Scientifically</li> <li>• Biology</li> <li>• Physical Geography</li> <li>• Plants</li> <li>• Animals</li> <li>• Living Things/Habitats</li> <li>• Seasonal Changes</li> <li>• PSHE</li> </ul>
<h2>Cool Conservation</h2> <ul style="list-style-type: none"> <li>• Introduction to different skills and techniques related to land management, wildlife protection and creating new habitats</li> <li>• Identification of environments and habitats present</li> <li>• Introduction to conservation as a concept</li> <li>• Hard and soft conservation relevant to location</li> <li>• Everyday conservation – recycling, reusing and why is this important?</li> </ul>	<p>KS 2, 3, 4 &amp; 5</p>	<ul style="list-style-type: none"> <li>• Working Scientifically</li> <li>• Physical Geography</li> <li>• Biology</li> <li>• Plants</li> <li>• Animals</li> <li>• Living Things/Habitats</li> <li>• Seasonal Changes</li> <li>• Uses of materials</li> <li>• PSHE</li> </ul>





## Discover, Explore and Learn at the Ribble Estuary with the RSPB

Our lakeside location, just a few minutes' walk from the mud, salt marsh and sand dunes of the mighty River Ribble, is the perfect base to explore the seaside with us. Enjoy affordable curriculum linked sessions that aim to engage and inspire your pupils.

The Ribble Discovery Centre, which we run in partnership with Fylde Council, offers a unique hands-on and fun learning experience. With opportunities to uncover the secrets of the Ribble Estuary mud and the creatures that call it home, and practical field work on the sand dunes, there are opportunities for all key stages.

Our centre has a learning space which you can use as a base for your visit. Within easy reach of

this, there is a variety of interesting habitats, making a trip to the Ribble Discovery Centre a safe, yet exciting coastal visit.

## Primary and Secondary School Activities

We offer a number of activities tailored from Early Years Foundation Stage (EYFS) up to A-Level. Primary focused seasonal walks, discovering mud mini-beasts and habitats as well as seaside exploring. We also offer activities on geographical fieldwork, coastal landscape management and succession for high school and college level.

Choose from one session for a half day visit or two to create a full day visit with your class.





## Survey Work

Sessions aim to investigate our local coastal area through a range of techniques including observation, recording and sampling. The surveys we offer include:

- Shoresearch: Identifying and recording the marine life that lives in the artificial rockpools created in the hexagonal sea wall feature along Blackpool's coast. Trends in species recorded over time may be used towards further protection for our coasts or be an indicator species for climate change and other environmental factors and habitats from pioneer species towards climax communities.
- Vegetation surveys: Using identification techniques to find, identify, and record plant species on our coast. This could take part on our beach, sand dunes, or be incorporated into a sand dune succession transect survey highlighting the changes in vegetation and habitats from pioneer species towards climax communities.
- Butterfly and moth surveys: Follow our transect around the paths of our coastal nature reserve in order to find, identify, record and (if you're lucky!) photograph the butterfly species on our coastline. This information will be collated and submitted to Butterfly Conservation to protect our local populations.



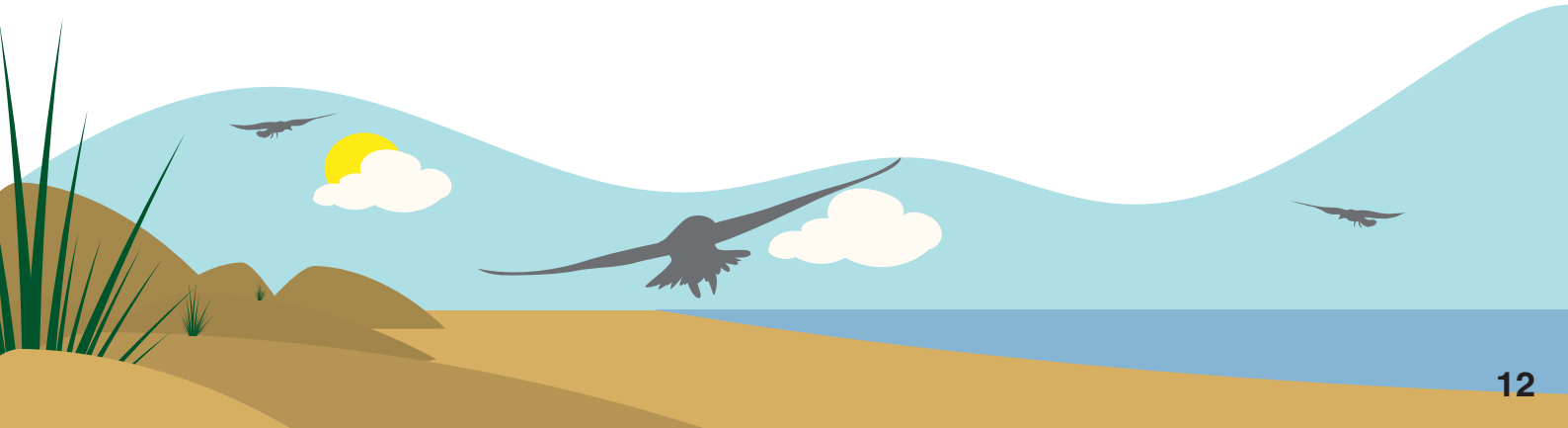


- **Breeding bird surveys:** Follow our transect around the paths of our coastal nature reserve in order to find, identify, and record the variety of bird species present on our coast. Birds can be identified from a visual inspection using our identification keys or from their distinct calls and sounds. All the recorded information will be collated and submitted to monitor our local bird species.
- **Sand dune/coastal bioblitz:** This survey is an intense period of biological surveying using a range of different techniques in an attempt to record all the living species within a designated area during a given time. Students will gain a wide overview of different survey techniques plus a broad knowledge of the species on our coastline.

If you would like to join us to survey any particular species or habitat along the coastal region of the Fylde, please get in touch.

## Fylde Sand Dunes Project

The Fylde Sand Dunes Project is delivered by partnership organisations Lancashire Wildlife Trust, Fylde Council and Blackpool Council. The project is funded by the Environment Agency to protect and conserve the sand dune system from Blackpool to Lytham. You can get involved by joining us to undertake practical work on the sand dunes. This work can contribute towards the Conserver Level of John Muir Award or other environmental initiatives.





## Coastal Education - Bring the Irish Sea to your school!

Our school sessions are designed to bring the Irish Sea alive for your pupils. We deliver classroom based activities and assemblies for primary schools, secondary schools and colleges. We also work with after school groups, such as eco-clubs.

Classroom and assembly based sessions cover a range of topics, including local species, threats to marine life such as plastic pollution and marine conservation.

These are planned with the children in mind, involving a range of engaging,

hands on activities and games to cover all learning styles.

Every activity has learning-outcomes, which are agreed with the teacher beforehand. Our staff have a wealth of marine knowledge and expertise so please get in touch so we can design a bespoke session to match your curriculum needs.

If you would prefer an outdoor setting and wish to bring your pupils to Fylde's stunning coastline and beaches, please read about our Beach Schools scheme.



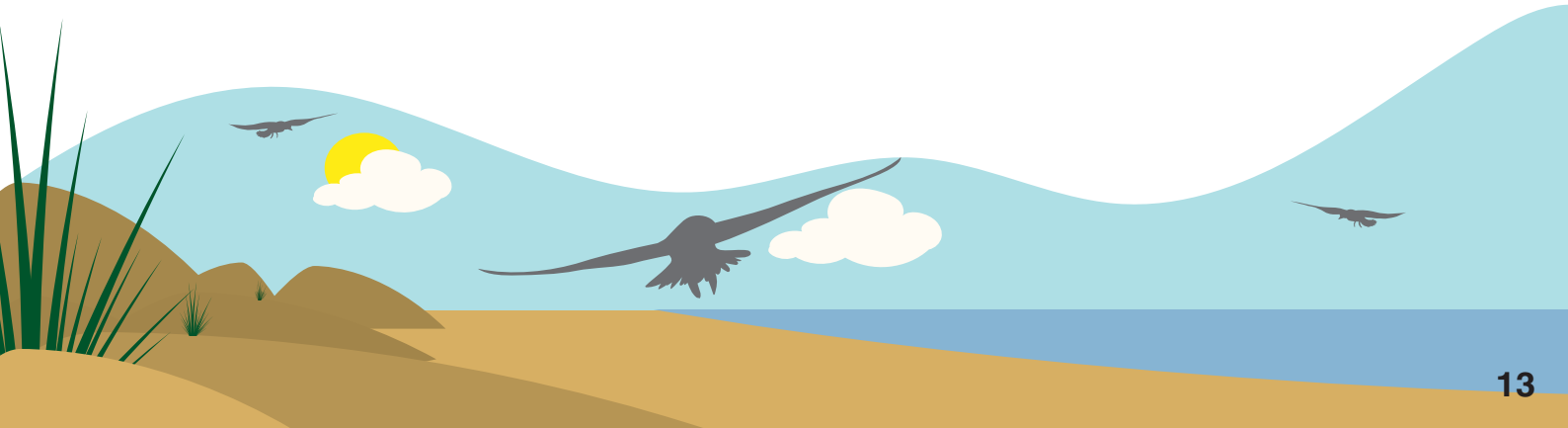


The Fylde Sand Dunes Project aims to widen the sand dunes to increase their efficiency as a soft sea defence and to improve the dunes as a wildlife habitat. In order to help us achieve these aims, pupils / students can join us for half or full day sessions to help us undertake practical conservation and habitat management on the sand dunes. The work we undertake includes:

- Controlling invasive non-native species
- Repairing the dunes by thatching and filling blow-outs
- Developing pathways to create recognisable access points to the beach in order to concentrate footfall in one designated area and reduce dune erosion

- Planting dune grasses and using chestnut paling and other natural materials to trap wind-blown sand and create new dunes on the foreshore
- Creating dune slacks by digging down to the water table and creating a wetland to encourage a greater diversity of wildlife

The activities will vary depending on what time of year pupils come out with us. Some schools come out three times a year (Spring, Summer and Autumn) to experience the full range of activities on offer. Pupils will develop practical skills they can use outside the classroom plus learn about the wildlife and habitats that thrive in this environment.



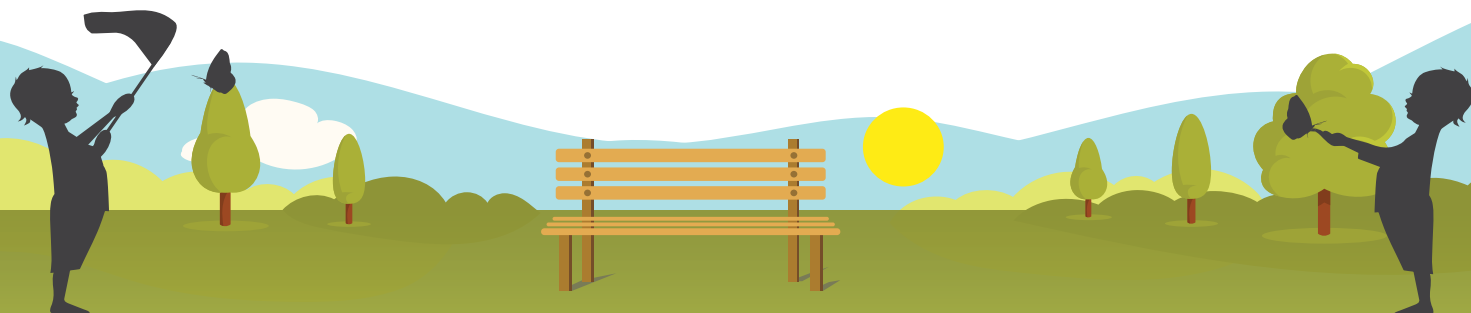


## Explore, Discover, Learn, Play

The Park View 4U Education Team are based at the QEII Park View Playing Fields, Lytham and deliver environmental education sessions for Early Years Foundation Stage (EYFS), Key Stage 1-3, SEND and home education groups. All sessions are bespoke to your requirements, adapted to the seasons and meet the National Curriculum learning outcomes with links to the Eco School's framework and outdoor learning best practice.

### Education Activities:

- **Environmental art:** Look at the work of environmental and land artists and learn new techniques to create 2D and 3D art using natural materials found on the park.
- **Minibeasts:** learn about different habitats and how the invertebrates that live there have adapted to survive.
- **Traditional tales and storytelling:** Use story stones, natural storyboards and activities to re-tell well known stories outdoors such as Billy Goats Gruff.
- **Mini shelters and den building:** What do animals need to survive? Learn about shelter building techniques, camouflage and the properties of natural materials to create dens.
- **Bees:** learn about the lifecycle of a honey bee, what it eats and how important they are. Have a closer look at our bee hives and bee camera.
- **Growing success:** explore our kitchen garden and discover the wide range of fruit, vegetables and flowers we grow. Learn about seeds, how they disperse, what they need to survive and the names of different parts of the plant. Make a mini planter to take home.





- **Seasons:** Come and explore the park and discover what wildlife and plants we can find at this time of year. Learn about the seasonal changes.
- **Pirates:** time for a swashbuckling adventure. Complete the tasks to graduate from landlubber to pirate for a life on the ocean wave.
- **Food chains and life cycles:** What animals live at the playing fields and how do they survive? Explore the park to look for clues about different stages of their life-cycles and learn about food chains and webs.
- **Additional activities:** Recycling and sustainability, composting and worms, paper making, willow weaving, natural dyes, foraging, tracks and trails, plants and their uses, hibernation, birds and nest building, outdoor maths, wildlife gardening and bug box making and much more.

## Qualifications & Experience

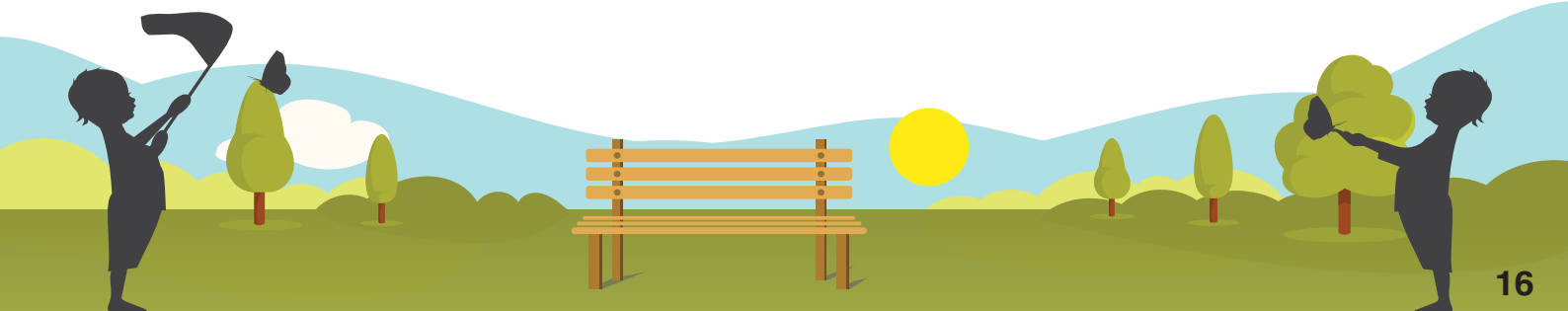
All of our leaders are Forest and Beach School qualified as well as have additional skills such as ethnobotany, advanced bush craft Level 3, arts award practitioners, EYFS practitioner, Primary School teacher and over 20 years' experience in delivering outdoor education.

## Facilities

We have a purpose built Forest School outdoor classroom with fire pit and canopy, Eco Pod Community Classroom with toilet and kitchenette facilities as well as solar panels, rainwater harvesting and hearing loop system.

## Training

We can provide outdoor education training, sunset and twilight sessions as well as outreach sessions at your site.





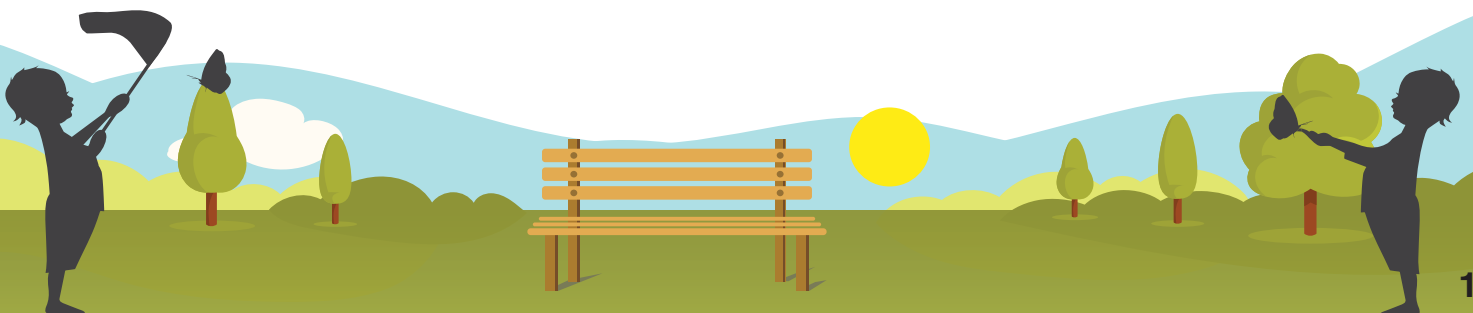


## Forest School

Forest School develops the physical, social, cognitive, linguistic and emotional aspects of the learner. It nurtures the child and fosters creative thinking, resilience and independence. It involves regular contact with a site so sessions are usually booked in 6 or 10 week blocks.

### Activities can Include:

- Shelter building
- Campfire cooking
- Fire lighting techniques
- Safe use of tools such as bow saw, drills, knives, bill hook
- Observing seasonal changes
- Foraging
- Environmental art
- Knots and ropes
- Self-led activities and risk benefits
- Identification of flora and fauna
- Uses of plants
- Learning traditional skills





## Qualifications & Experience

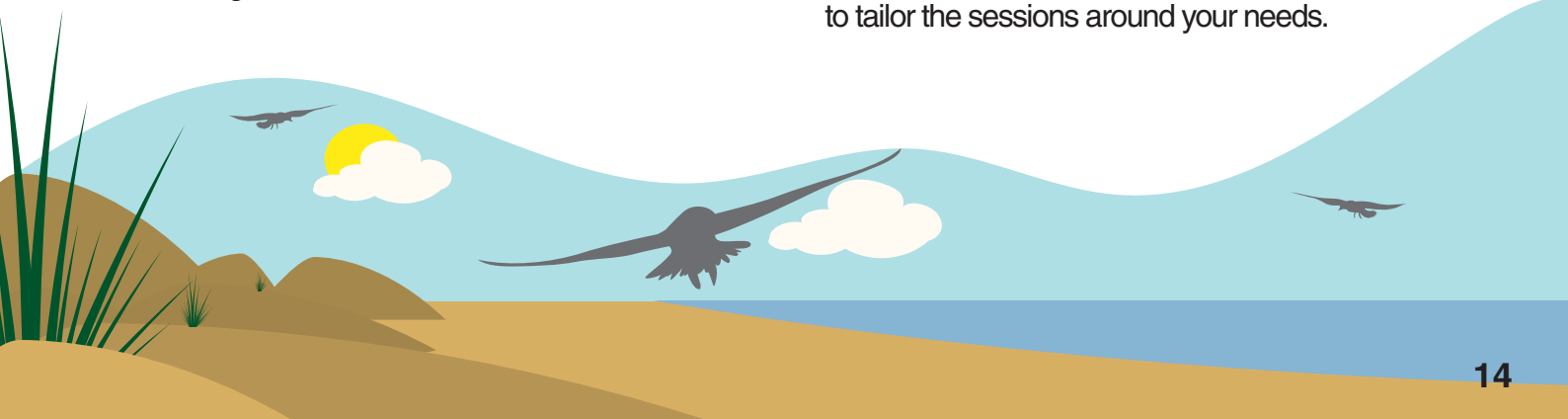
The Fylde based Beach School Project is delivered by partnership organisation's Lancashire Wildlife Trust, Park View 4 U and Fylde Council. Beach School is a unique outdoor learning experience that aims to improve pupils' knowledge about the coastal environment through exciting games and activities. Themes explored through the project include:

- How to behave sensibly and act responsibly when using the beach
- Exploring the natural coastal environment: rock pooling, mud dipping, pond dipping (in dune slacks), minibeast hunting in sand dunes, strandline searches, egg case hunts etc.
- Seasons and tides
- Pressures on the marine environment; including over fishing, marine pollution and plastics
- Species identification and information
- Coastal habitats
- Understanding sea defences – hard/soft defences

- How marine flora and fauna are adapted to survive in their environment
- Practical sand dune conservation
- Guided walks along the beach / sand dunes
- Mini beach cleans
- Environmental and marine art
- Map reading and orienteering
- Survival skills including building shelters, fire lighting and outdoor cooking

Within these activities children will also develop primary skills such as team working, basic instincts, confidence in an outdoor setting, emotional intelligence, social skills and health and safety awareness.

If you are interested in spending a half or full day with us at the seaside learning about our amazing coastline, please get in touch. Our sessions can be booked as a one-off "taster" session or as a block booking for as many weeks as you require. Our trained Beach School Officers have extensive knowledge and experience to tailor the sessions around your needs.



# Contact Us

## Bookings and Contacts

If you are interested in booking exciting environmental education from one of our partners in Fylde, then this step by step guide should help explain the booking process.

## Fylde Ranger Service

### How to Book the Rangers

If you are interested in Ranger School, either all five workshops or a single session to supplement your current classroom topic, or after school club, then don't hesitate to contact the Rangers on either **01253 658469** or [rangers@fylde.gov.uk](mailto:rangers@fylde.gov.uk).

We can discuss your requirements, number of pupils and whether to be school based or offsite at a park.

## Park View 4U

### Booking is Easy

Just contact us on [ecopod@parkview4u.org.uk](mailto:ecopod@parkview4u.org.uk) to discuss your requirements.

We will email a booking form to you.

Complete the booking form and return it to us and we will confirm your booking by email.

### How to find us

QEII Park View Playing Fields,  
Park View Road,  
Lytham  
FY8 4JE

**01253 741955**

## What Can We Do For You?

Think about what it is you want. Which partner? Which topics? Can you travel? Do you want a school visit? How long do you want us for? Any special requirements?



## Get in Touch

Once you know who and what you want, contact the relevant organisation using the contact details listed below for an informal chat. Let them know what you want or what you've got in mind.



## Make a Booking

Once you are happy with the activities arranged for your school, then the session can be booked into your school diary. Prices will be also be discussed at this stage.



## Confirmation

Once everything has been finalised, you will receive a confirmation of your booking which you can check and return on the day of the visit. Please check that all details are correct. Inform us of any changes that may occur as soon as possible.

# Contact Us

## Lancashire Wildlife Trust

To book or find out more about any of our coastal education sessions including; Beach School, the Fylde Sand Dunes, coastal conservation workshops, surveys, coastal walks, talks and presentations, please contact Amy Pennington from Lancashire Wildlife Trust  
Email - [apennington@lancswt.org.uk](mailto:apennington@lancswt.org.uk)  
Mobile - **07860 952290**.

You can also visit our social media pages by searching for 'Fylde Sand Dunes' and 'Living Seas North West'. Alternatively please visit:  
[www.livingseasnw.org.uk](http://www.livingseasnw.org.uk)

## RSPB

### To find out more

All our latest session information including prices and how to book can be found on our website at [www.rspb.org.uk/fun-and-learning/for-teachers/school-trips/ribble-discovery-centre/](http://www.rspb.org.uk/fun-and-learning/for-teachers/school-trips/ribble-discovery-centre/) or by emailing us at [schoolbookings@rspb.org.uk](mailto:schoolbookings@rspb.org.uk).





**Lancashire,  
Manchester &  
N Merseyside**

Park View 4U  
Putting the Heart back into Lytham



## Using Parks & Coast To Deliver The National Curriculum