

# Gender Pay Gap

Information 2023

## 1.0 Introduction

Gender Pay Gap reporting legislation requires large employers such as ourselves to publish their overall mean and median gender pay gaps from 2018.

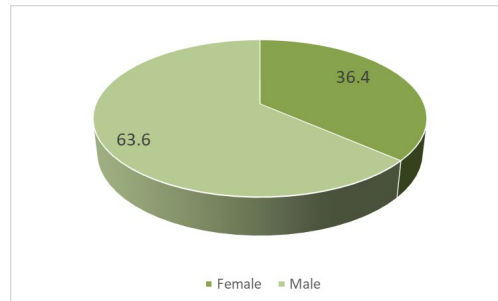
This is therefore the sixth year gender pay gap data has been reported.

## 2.0 Context

Fylde Council is a District Council which provides a variety of diverse services to over 77,000 Fylde residents.

All Fylde Council employees are remunerated according to set pay scales; posts are regularly reviewed and agreed by employee representatives through a formal job evaluation system.

Our workforce is currently 258<sup>1</sup> employees of whom two thirds are male (63.6 %).

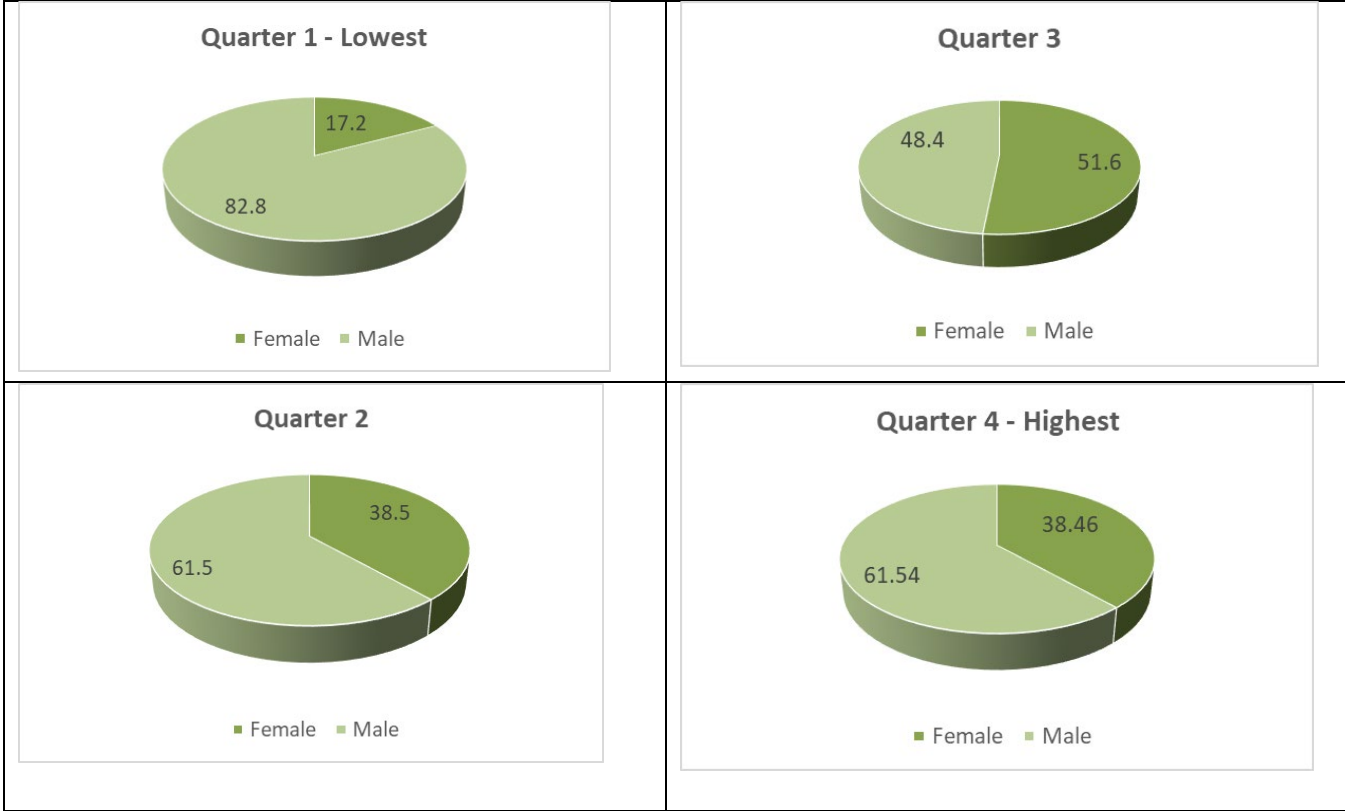


Fylde Council is committed to eliminating discrimination and encouraging equality and diversity in our workforce.

## 3.0 Data

1	Mean Pay Gap	<b>-4.75</b>
2	Median Pay Gap	<b>-18.33</b>
3	Mean bonus gender pay gap*	*Fylde Council does not operate any bonus scheme and therefore has no bonus gender pay gap.
4	Median bonus gender pay gap*	
5	Proportion of males /females receiving a bonus payment	
6	Proportion of males and females in each quartile pay band	

<sup>1</sup> Number of those employees in scope of the Gender pay gap.



**We confirm that the data provided is accurate.**

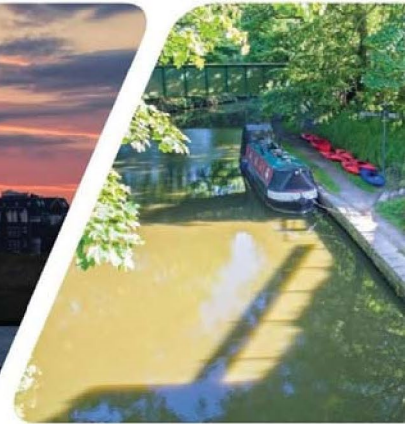
Signature: 

Allan Oldfield, Chief Executive

Date:



**Fylde**  
Council



© Fylde Borough Council copyright 2016

You may re-use this document/publication (not including logos) free of charge in any format or medium. You must re-use it accurately and not in a misleading context. The material must be acknowledged as Fylde Borough Council copyright and you must give the title of the source document/publication.

Where we have identified any third party copyright material you will need to obtain permission from the copyright holders concerned.

This document/publication is also available on our website at [www.fylde.gov.uk](http://www.fylde.gov.uk).

Any enquiries regarding this document/publication should be sent to us at the Town Hall, St Annes Road West, St Annes FY8 1LW, or to [listening@fylde.gov.uk](mailto:listening@fylde.gov.uk).