



1. Proposed Licensing Plan - Basement GA

SCALE - 1 : 100@A1

Legend			
	Smoke detector		CO2 2kg fire extinguisher
	Sounder		Foam 6 litre fire extinguisher
	Manual call point		Fire Blanket
FD30s	30 minute fire rated doorset		Emergency exit sign
FD60s	60 minute fire rated doorset		Running man symbol
VP	Vision panel		External Emergency bulkhead lighting
F.E.	Fire exit		Linear LED emergency lighting (refer to M&E drawings for Types)
	CCTV		Linear LED emergency lighting (refer to M&E drawings for Types)

FIRE ALARM SYSTEM
The fire alarm system will consist of an analogue addressable automatic fire alarm system in accordance with BS5839-1, BS9999. The category of protection will be L1.

EMERGENCY LIGHTING SYSTEM
The emergency lighting system will consist of a complete 3 hour non-maintained emergency lighting installation fully in accordance with BS5266, utilising a combination of self-contained LED satellite emergency units.

Key Plan



KETTERING | HARBOROUGH | GLOUCESTER | MILTON KEYNES | NEWCASTLE

Project Title:
Lindum Hotel

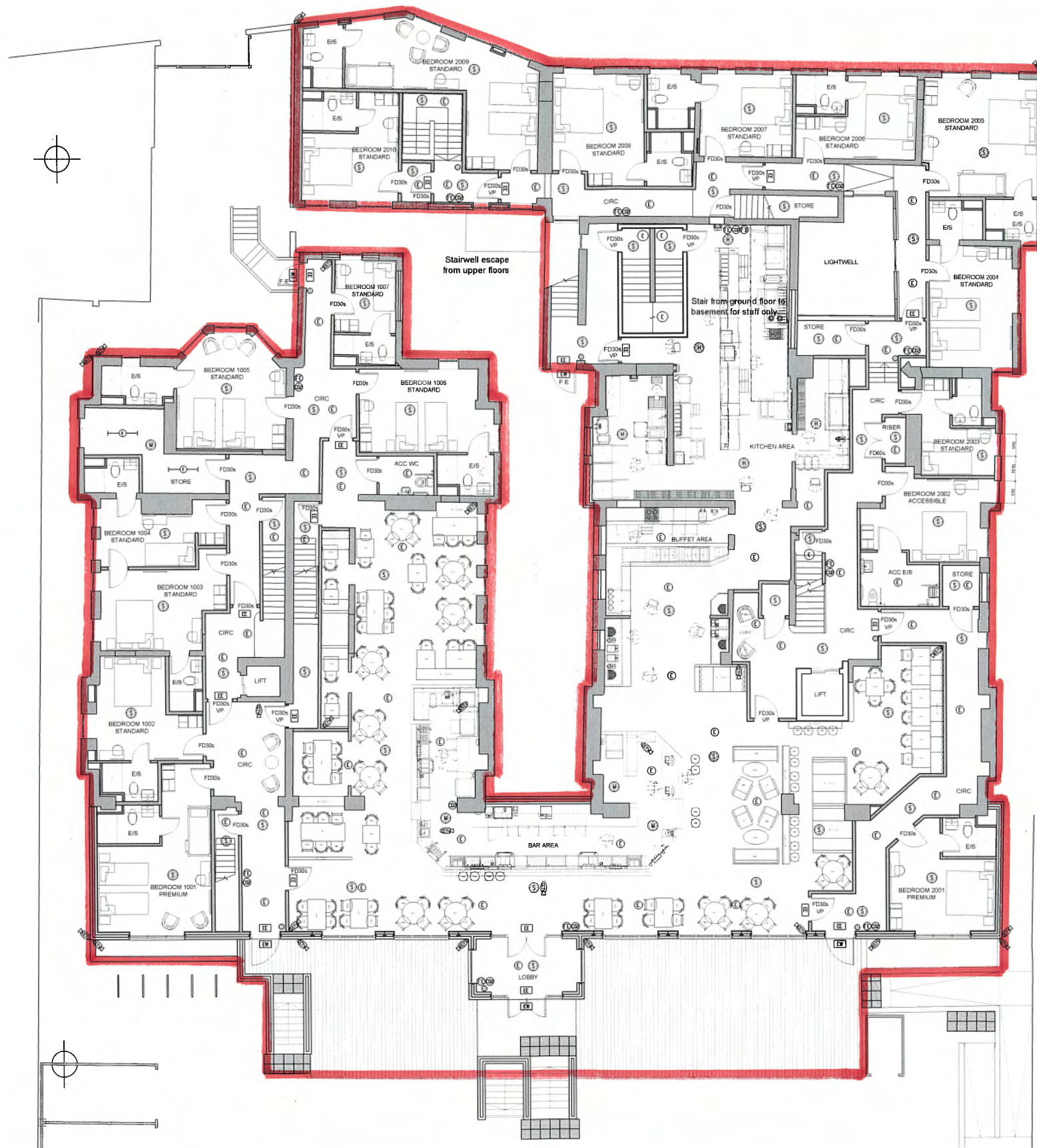
Client:
The Inn Collection Group

Drawing Title:
Proposed Licensing Plan - Basement Floor GA

Drawn By: JAK	Checked By: SJRR	Scale@A1: 1 : 100	Date: 01.08.23
Status: Construction Issue	Rev: C1	File No: 10231	

Do not scale from this drawing for construction or acquisition purposes. Responsibility is not accepted for errors made by others in scaling from this drawing. All construction information must be taken from figured dimensions only. All dimensions and levels must be checked on site and discrepancies between drawings and specification must be reported to GSSArchitecture. © Copyright GSSArchitecture. Ordnance Survey © Crown Copyright 2022. All rights reserved. Licence number GSS 100017356. Map Data Copyright 2022 Google. Registered Office: 35 Headlands, Kettering, Northants, NN15 7ES. Tel: 01536 513 165. Email: gss@gotch.co.uk.

C1	01.08.23	JAK	SJRR	Issued for Information
Rev	Date	Dm	Chk	Description



1. Proposed Licensing Plan - Ground Floor GA

SCALE - 1 : 100@A1

Legend

	Smoke detector		CO2 2kg fire extinguisher		Emergency exit sign
	Sounder		Foam 6 litre fire extinguisher		Running man symbol
	Manual call point		Fire Blanket		External Emergency bulkhead lighting
	30 minute fire rated doorset				Linear LED emergency lighting (refer to M&E drawings for Types)
	60 minute fire rated doorset				Linear LED emergency lighting (refer to M&E drawings for Types)
	Vision panel				
	Fire exit				
	CCTV				

FIRE ALARM SYSTEM

The fire alarm system will consist of an analogue addressable automatic fire alarm system in accordance with BS5839-1, BS999. The category of protection will be L1.

EMERGENCY LIGHTING SYSTEM

The emergency lighting system will consist of a complete 3 hour non-maintained emergency lighting installation fully in accordance with BS5266, utilising a combination of self-contained LED satellite emergency units.

Key Plan



0 1 2 3 4 5

GSSarchitecture
KETERING | HARRGATE | GLOUCESTER | MILTON KEYNES | NEWCASTLE

Project Title:
Lindum Hotel

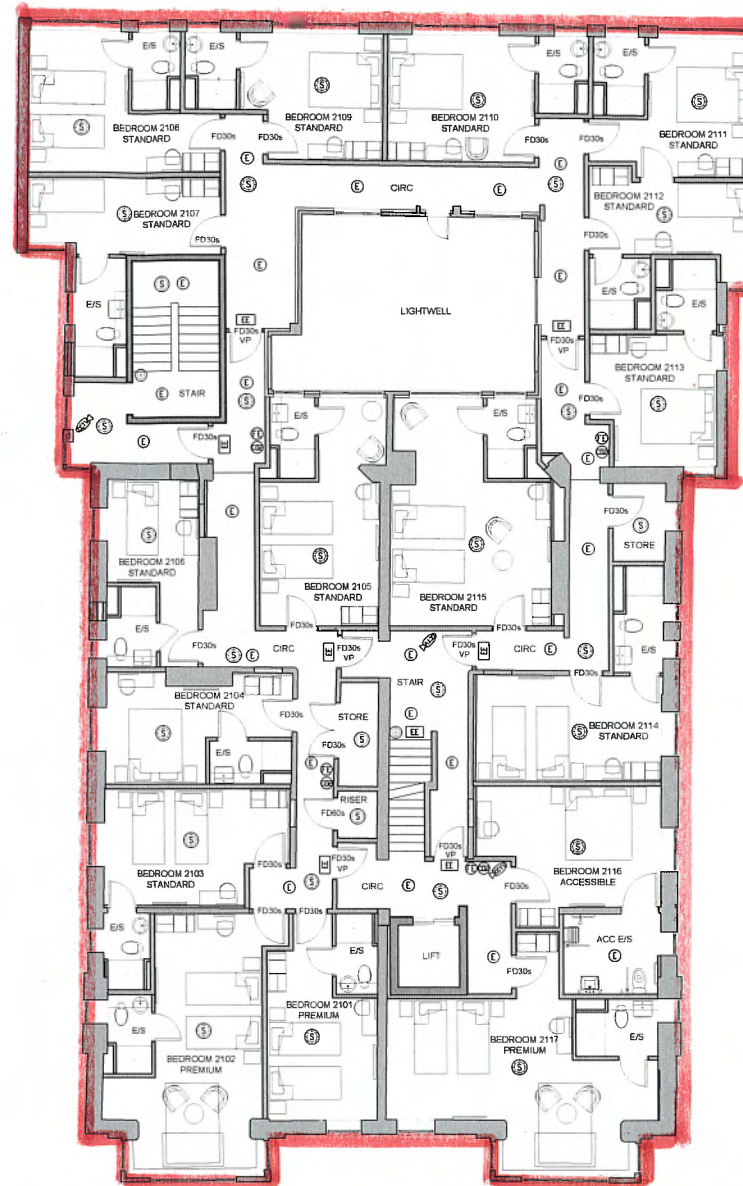
Client:
The Inn Collection Group

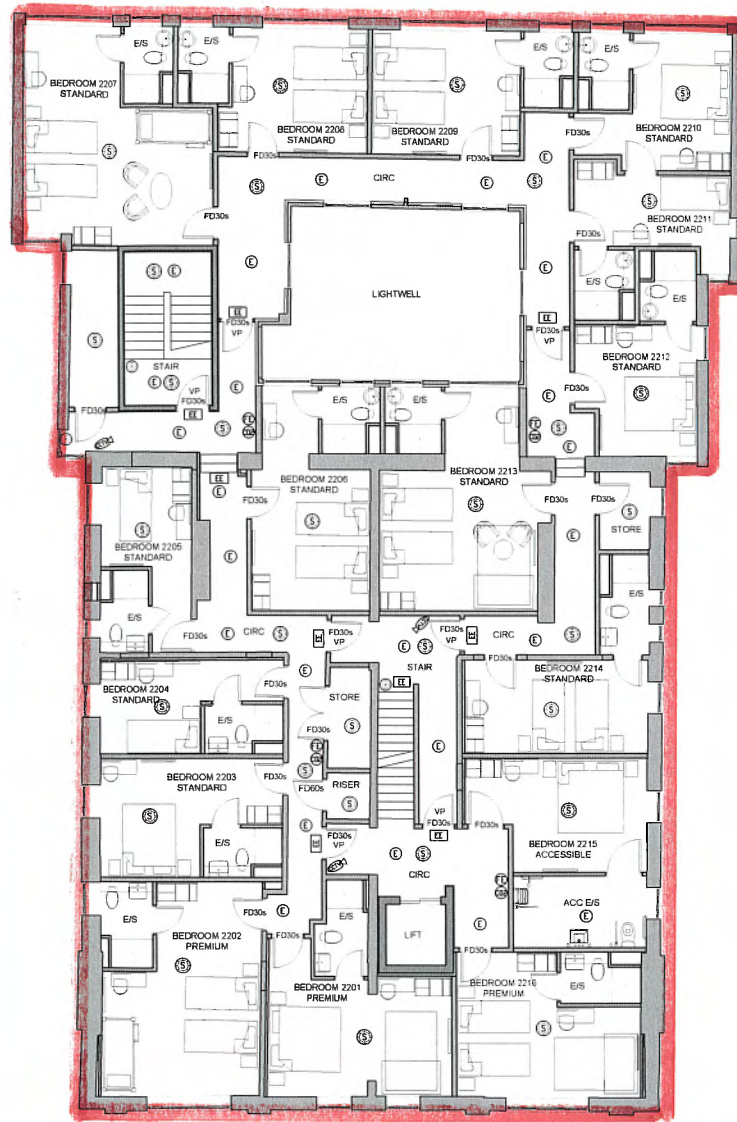
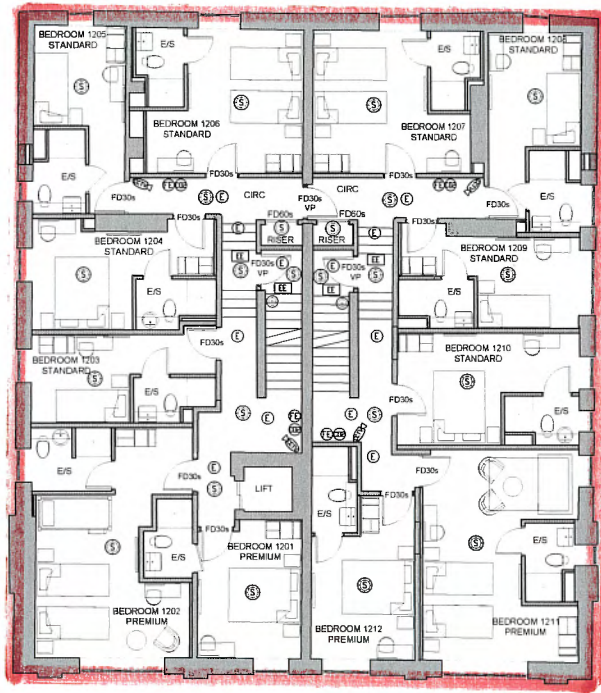
Drawing Title:
Proposed Licensing Plan - Ground Floor GA

Drawn By: JAK
Checked By: SJRR
Scale@A1: 1 : 100
Date: 01.08.23

Status:
Construction Issue
Rev: (68) 011

Rev: C1





1. Proposed Licensing Plan - Second Floor GA

SCALE - 1 : 100@A1

Legend

	Smoke detector		CO2 2kg fire extinguisher		Emergency exit sign
	Sounder		Foam 6 litre fire extinguisher		Running man symbol
	Manual call point		Fire Blanket		External Emergency bulkhead lighting
	30 minute fire rated doorset				Linear LED emergency lighting (refer to M&E drawings for Types)
	60 minute fire rated doorset				Linear LED emergency lighting (refer to M&E drawings for Types)
	Vision panel				
	Fire exit				
	CCTV				

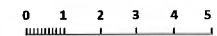
FIRE ALARM SYSTEM

The fire alarm system will consist of an analogue addressable automatic fire alarm system in accordance with BS5839-1, BS999. The category of protection will be L1.

EMERGENCY LIGHTING SYSTEM

The emergency lighting system will consist of a complete 3 hour non-maintained emergency lighting installation fully in accordance with BS5266, utilising a combination of self-contained LED satellite emergency units.

Key Plan



gssarchitecture
KETTERING | HARROGATE | GLOUCESTER | MILTON KEYNES | NEWCASTLE

Project Title:
Lindum Hotel

Client:
The Inn Collection Group

Drawing Title:
Proposed Licensing Plan - Second Floor GA

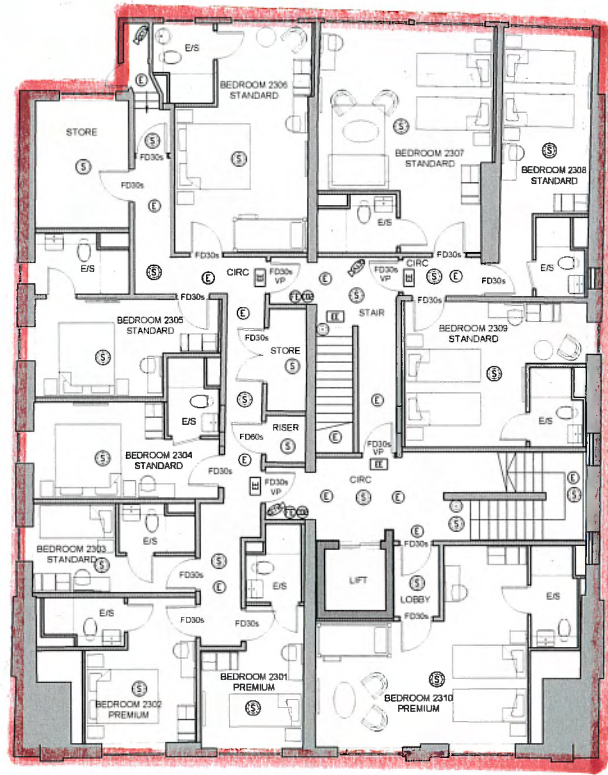
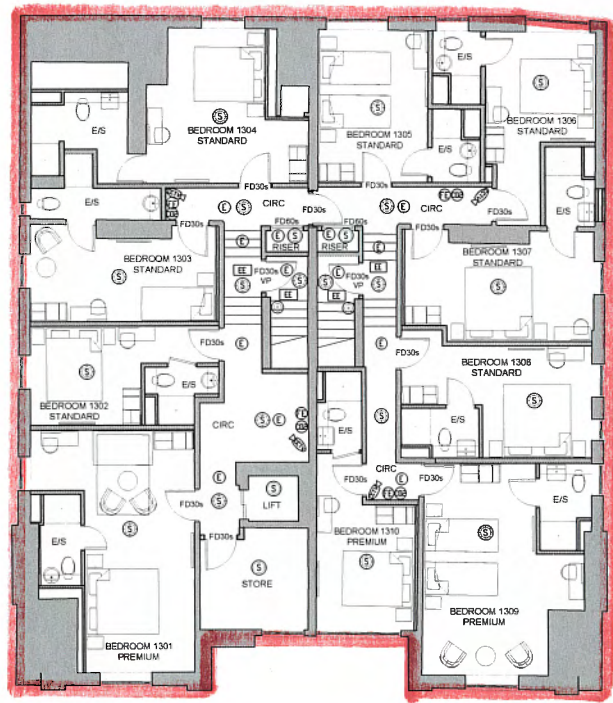
Drawn By: JAK
Checked By: SJRR
Scale@A1: 1 : 100
Date: 09.12.22

Status:
Construction Issue
File No: 10231

Drawn No: (68) 013
Rev: C1

Do not scale from this drawing for construction or acquisition purposes. Responsibility is not accepted for errors made by others in scaling from this drawing. All construction information must be taken from figured dimensions only. All dimensions and levels must be checked on site and discrepancies between drawings and specification must be reported to GSSArchitecture. © Copyright GSSArchitecture. Ordnance Survey © Crown Copyright 2022. All rights reserved. Licence number GSS 100017356. Map Data Copyright 2022 Google. Registered Office: 35 Headlands, Kettering, Northants, NN15 7ES. Tel: 01536 513 165. Email: gss@gotch.co.uk.

C1 01.08.23 JAK SJRR Issued for Information
Rev Date Dm Chk Description



1. Proposed Licensing Plan - Third Floor GA

SCALE - 1 : 100@A1

Legend

	Smoke detector	CO2	CO2 2kg fire extinguisher		Emergency exit sign
	Sounder	FE	Foam 6 litre fire extinguisher		Running man symbol
	Manual call point	FB	Fire Blanket		External Emergency bulkhead lighting
FD30s	30 minute fire rated doorset				Linear LED emergency lighting (refer to M&E drawings for Types)
FD60s	60 minute fire rated doorset				Linear LED emergency lighting (refer to M&E drawings for Types)
VP	Vision panel				
F.E.	Fire ext				
	CCTV				

FIRE ALARM SYSTEM

The fire alarm system will consist of an analogue addressable automatic fire alarm system in accordance with BS5839-1, BS999. The category of protection will be L1.

EMERGENCY LIGHTING SYSTEM

The emergency lighting system will consist of a complete 3 hour non-maintained emergency lighting installation fully in accordance with BS5266, utilising a combination of self-contained LED satellite emergency units.

Key Plan



0 1 2 3 4 5
m

GSSarchitecture
KETERING | HARRGATE | GLOUCESTER | MILTON KEYNES | NEWCASTLE

Project Title:
Lindum Hotel

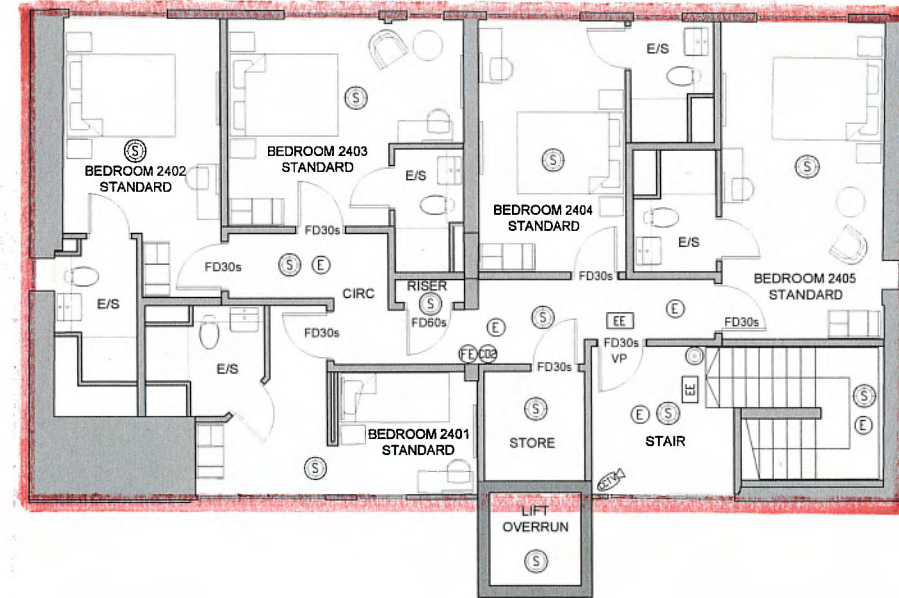
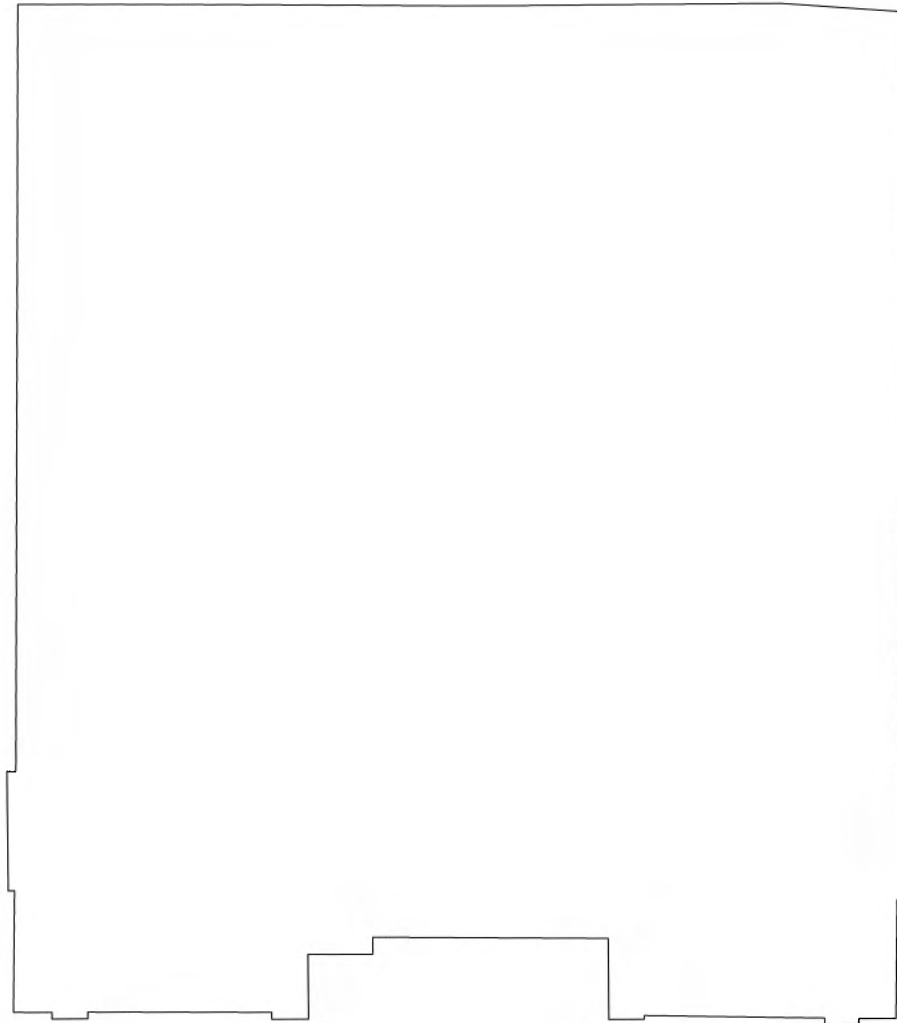
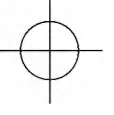
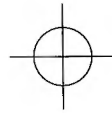
Client:
The Inn Collection Group

Drawing Title:
Proposed Licensing Plan - Third Floor GA

Drawn By: JAK
Checked By: SJRR
Scale@A1: 1 : 100
Date: 01.08.23

Status:
Construction Issue
File No: 10231

Drawg No: (68) 014
Rev: C1



1. Proposed Licensing Plan - Fourth Floor GA

SCALE - 1 : 100@A1

Legend

	Smoke detector		CO2 2kg fire extinguisher		Emergency exit sign
	Sounder		Foam 6 litre fire extinguisher		Running man symbol
	Manual call point		Fire Blanket		External Emergency bulkhead lighting
FD30s	30 minute fire rated doorset				Linear LED emergency lighting (refer to M&E drawings for Types)
FD60s	60 minute fire rated doorset				Linear LED emergency lighting (refer to M&E drawings for Types)
VP	Vision panel				
F.E.	Fire exit				
	CCTV				

FIRE ALARM SYSTEM

The fire alarm system will consist of an analogue addressable automatic fire alarm system in accordance with BS5839-1, BS999. The category of protection will be L1.

EMERGENCY LIGHTING SYSTEM

The emergency lighting system will consist of a complete 3 hour non-maintained emergency lighting installation fully in accordance with BS5266, utilising a combination of self-contained LED satellite emergency units.

Key Plan



0 1 2 3 4 5

GSSarchitecture
KETERING | HARROGATE | GLOUCESTER | MILTON KEYNES | NEWCASTLE

Project Title:
Lindum Hotel

Client:
The Inn Collection Group

Drawing Title:
Proposed Licensing Plan - Fourth Floor GA

Drawn By: JAK
Checked By: SJRR
Scale@A1: 1 : 100
Date: 01.08.23

Status:
Construction Issue
Rev: 006
File No: 10231

Drawn By: JAK
Checked By: SJRR
Scale@A1: 1 : 100
Date: 01.08.23