

Fairhaven Lake and Gardens



Management & Maintenance Plan
2018 – 2023

FAIRHAVEN LAKE MANAGEMENT PLAN

CONTENTS

Section	Page Number
Foreword	5
Judges Recommendations and Responses	7
1. Introduction	
1.1 Acknowledgments	11
1.2 Purpose of the Management Plan	11
1.3 Responsibility of the Plan	12
1.4 Site Details	12
1.5 History of the Site	14
1.6 Site Ownership, rights of way and Designations	15
1.7 Educational Value	15
1.8 Sport and Recreational Value	16
1.9 Demographics	17
1.10 The Strategic Framework	17
1.11 Staff Structures and Responsibilities	19
1.12 Aerial Photograph	21
1.13 Mission Statement	22
2. Welcoming Park	
2.1 Welcoming	24
2.2 Good and Safe Access	24
2.3 Signage	25

2.4	Equal Access for All	25
2.5	Commemorative Bench Scheme	26
3. Healthy, Safe and Secure		
3.1	General Health and Safety Arrangements	28
3.2	Safe Equipment	30
3.3	Personal Safety in the Gardens	31
3.4	CCTV	31
3.5	Dog Controls	32
3.6	Geese Fouling	32
3.7	Appropriate Provision of Facilities	33
3.8	Fairhaven Lake Boating Service	33
4. Well Maintained and Clean		
4.1	Litter and Waste management	36
4.2	Horticultural Design and Management	36
4.3	Arboricultural Management	38
4.4	Building and Infrastructure Maintenance	39
4.5	Equipment Maintenance	39
4.6	Dealing with Graffiti and Vandalism	40
5. Environmental Management		
5.1	Managing Environmental Impact	42
5.2	Chemical Use	44
5.3	Peat Use	45
6. Biodiversity, Landscape & Heritage		
6.1	Background	47
6.2	Management of Natural Features, Wild Flora and Fauna	47
6.3	Conservation of Landscape Features, Buildings and Structures	49
6.4	Heritage Lottery Funding Bid	52
6.5	Sea Defence Works	54

7. Community Involvement	
7.1 Friends of Fairhaven Lake and Gardens	57
7.2 NLHF Volunteer Groups	58
7.3 Wider Stakeholders	59
7.4 Appropriate Provision for the Community	61
8. Marketing & Communication	
8.1 General	63
8.2 Information and Visitor Management	64
8.3 Marketing methods	65
8.4 Distribution of Marketing Materials	66
8.5 Target Audience	66
9. Management	
9.1 Clearly Address Green Flag Criteria in Management Prescriptions	67
9.2 Management Plans Must be Actively Implemented and Reviewed	67
9.3 Sound Financial Management	67
10. Action Plan	69

Appendices:

Appendix A Health & Safety Data	75
Appendix B Annual Task Sheet	78
Appendix C Proposed Activities & Event Schedule 20/21	80

Foreword

The Borough of Fylde is situated on the Lancashire Coast and is a major tourism destination attracting some 3 million visitors per year. Parks and green spaces are a fundamental part of the fabric of the Fylde. Our parks and gardens provide attractions for visitors from both local urban and rural areas, and are also important at local level for tourism.

Fairhaven Lake is Fylde's largest destination green space, located on the Fylde Coast and is owned and managed by Fylde Council. Visitors and residents can enjoy a wide range of facilities, which are managed and maintained to a high standard. The site is currently going through a period of transition - the Council has secured £1.4 million Heritage Lottery Funding to spearhead a 3-year project to refurbish, restore and improve heritage features, recreational appeal and environmental value. Works will commence fully in 2020. A new Fairhaven Lake Friends Group has also been developed, who have been instrumental not only in the success of the NLHF bid, but will also play a key role in ensuring the sites ongoing success.

The Council, together with its partners, are committed to continuously improving the services and facilities offered. Essential to this aim is engaging the community to understand their needs and desires and increase community involvement.

In order to focus resources and agree priorities the management plan has been developed to set out a comprehensive programme for the site for the next five years. It details previous studies, current issues and priorities arising from recent community consultation.

The plan will remain a "live" document; indeed the need for it to evolve is fully recognised. To achieve this, robust mechanisms for monitoring and reviewing have been developed.



Cllr. Sue Fazackerley
Leader of the Council



Cllr. Cheryl Little
Chairman of the Leisure & Tourism
Committee

Green Flag Award 2018

Name of Site: Fairhaven Lake & Gardens
Managing Organisation: Fylde

Desk Assessment Feedback (Management Plan and supporting documentation)

Criteria	Strengths	Recommendations	Responses
Presentation	Well laid out, easy to follow, detailed index at the front, each GF criteria explained in good detail, responses to judges included at the front sets the scene well. Good use of photos	Keep up the good work although possibly less information on local demographics	The information on local demographics has been reviewed and amended.
Health, Safety & Security	Good detail on overarching H&S policies, event risk assessment, HSe leaflets staff trained in customer care – name badges etc, telephone available in foyer. Site based staff presence	More detail Fylde crime and disorder reduction partnership with regard to safe and secure streets and young people	This information has been updated.
Maintenance of equipment, buildings & landscape	Details on play inspections, PDA, british standards etc partnership working with play and project team. Detailed information is given for grounds maintenance, buildings and equipment maintenance, and who is responsible for it.		
Litter, cleanliness, vandalism	Daily litter collection and bin emptying plus weekly sweeping, flexible approach to suit changing demands is reassuring and	Not sure how effective a PSPO on barbecues would be, how would it be managed?	A PSPO has been adopted and is enforced seasonally by a security contractor and the Ranger Service. The PSPO will be legally in place for 3 years and will be reviewed

	evidences commitment in these austere times		after this period by Members and key officers. The focus is education of visitors to reduce incidents of fires however FPN's will be issued as a last resort.
Environmental Management	Environmental policy in place, very detailed list of activities that will achieve the objectives and specific initiatives bespoke to Fairhaven Parks & Gardens	Further details on challenges due to coastal location – sea defence works, coastal erosion etc	This information has been added to the management plan under 'Environmental Management' as well as 'Biodiversity, Landscape and Heritage'.
Biodiversity, Landscape and Heritage	Detailed and comprehensive, whilst easily conveying what is happening in the gardens.	Issues with geese, will egg dipping take place, how will this be managed? The excavation work in the Japanese garden warrants additional information.	This information is included in the plan. Information has been included in the plan.
Community Involvement	The Friends group clearly play an important role in the development of the park and. Good range of other groups also involved in park	Continued involvement of the community groups in the HLF project as it develops.	The council will continue to support and develop the volunteers and community groups.
Marketing & Communication	Excellent marketing and communication, digital presence is good, clear signage within the park, Marketing plan in place with good range of resources used to promote the park		
Overall management	The park management team, members of the local community and external partners are clearly working hard to enhance and develop the park.		

Additional comments

A very detailed and comprehensive management plan, with good reference to the HLF project, historical information, Thomas Mawson, community engagement etc

Overall the MP strikes the right balance, it flows evenly and retains the readers interest

Field Assessment Feedback

Criteria	Strengths	Recommendations	Responses
A Welcoming Place	Very welcoming, clear views throughout the park, good signage encourages visitors to enter.		
Healthy, Safe and Secure	Buoyancy aids available, good footpaths, car park available, plenty of parking nearby. Open and expansive nature of the park promotes a sense of security. Café, RSPB, boat concession all have staff visible	What are the QR codes for on the buoyancy aids?	The QR codes on the buoyancy aids, once scanned, takes you to information on the lifebuoys. This includes information on how to use the product.
Well Maintained and Clean	New toddler equipment well maintained, tennis courts and bowling greens in good condition, courts recently marked out		
Environmental Management	Revised signage will include environmental information, park is in an environmentally significant location, rangers developing and delivering activities	Is there signage in the park advertising the ranger led activities (I could have missed it)	Websites and social media are used to advertise activities and events. A new noticeboard will be installed as part of the development of the Heritage welcome centre. This is included in the action plan.
Biodiversity Landscape and Heritage	Clear efforts being made to preserve and promote the heritage of the park, HLF project, the excavation of the Japanese garden, building heritage promoted – café, boathouse etc	More information on climate change, rising sea levels	This information has been added to the management plan under 'Environmental Management' as well as 'Biodiversity, Landscape and Heritage'.
Community Involvement	Friends group have a clear involvement in the park, its management and		

	development. RSPB partnership in place. Audience development features in the HLF, links with local schools.		
Marketing and Communication	Increased marketing and comms picked up in the HLF project – RSPB / Fairhaven joint visitor centre / information point		
Management	Clear policies in place to manage the park, significant projects taking place to continually improve and develop the park		

Additional Comments

The park is well managed and maintained; it is well used with a wide range of attractions for its visitors. The community groups and stakeholders are actively involved in the park and its management,

It is commendable to see park officers delivering HLF projects and improvements in otherwise austere times, I wish the park staff every success in delivering the project

Introduction

1.1 ACKNOWLEDGEMENTS

Fylde Council's Parks & Coastal Services team acknowledge the essential contributions to this management plan from:

- Friends of Fairhaven Lake and Gardens
- FC Parks Development Team
- FC Sports Development Officer
- H.R Management (Blackpool Borough Council)
- Health and Safety Team (Blackpool Council)
- FC Community Safety Manager
- FC Risk Management and Insurance Officer
- FC Technical Services Management

Thank you for your valuable contributions to the management plan.

1.2 PURPOSE OF THE MANAGEMENT PLAN

It is imperative that this management plan seeks to ensure that the site is conserved and enhanced in its entirety due to its wildlife and environmental importance, whilst balancing the needs of visitors and residents alike.

The management plan seeks to: -

- Take a holistic approach in the management.

- Put community needs at the heart of the development and management. Benchmark management regimes and policies with national best practice.
- Establish standards that are effective and accountable.
- Provide a clear framework for the future development utilising existing and securing future resources
- Protect against undesirable developments.
- Provide a transparent form of monitoring.

1.3 RESPONSIBILITY OF THE MANAGEMENT PLAN

Fylde Council's Parks & Coastal Services worked in partnership with stakeholders and the community to compile this plan. Implementation of the plan will be led by Parks and Coastal Services with specific project leads as shown in the Action Plan. Likewise, monitoring and review of the plan will be led by Parks & Coastal Services however the Fairhaven Lake Friends Group and other key stakeholders will be engaged to ensure that the future revisions reflect a broad section of the community.

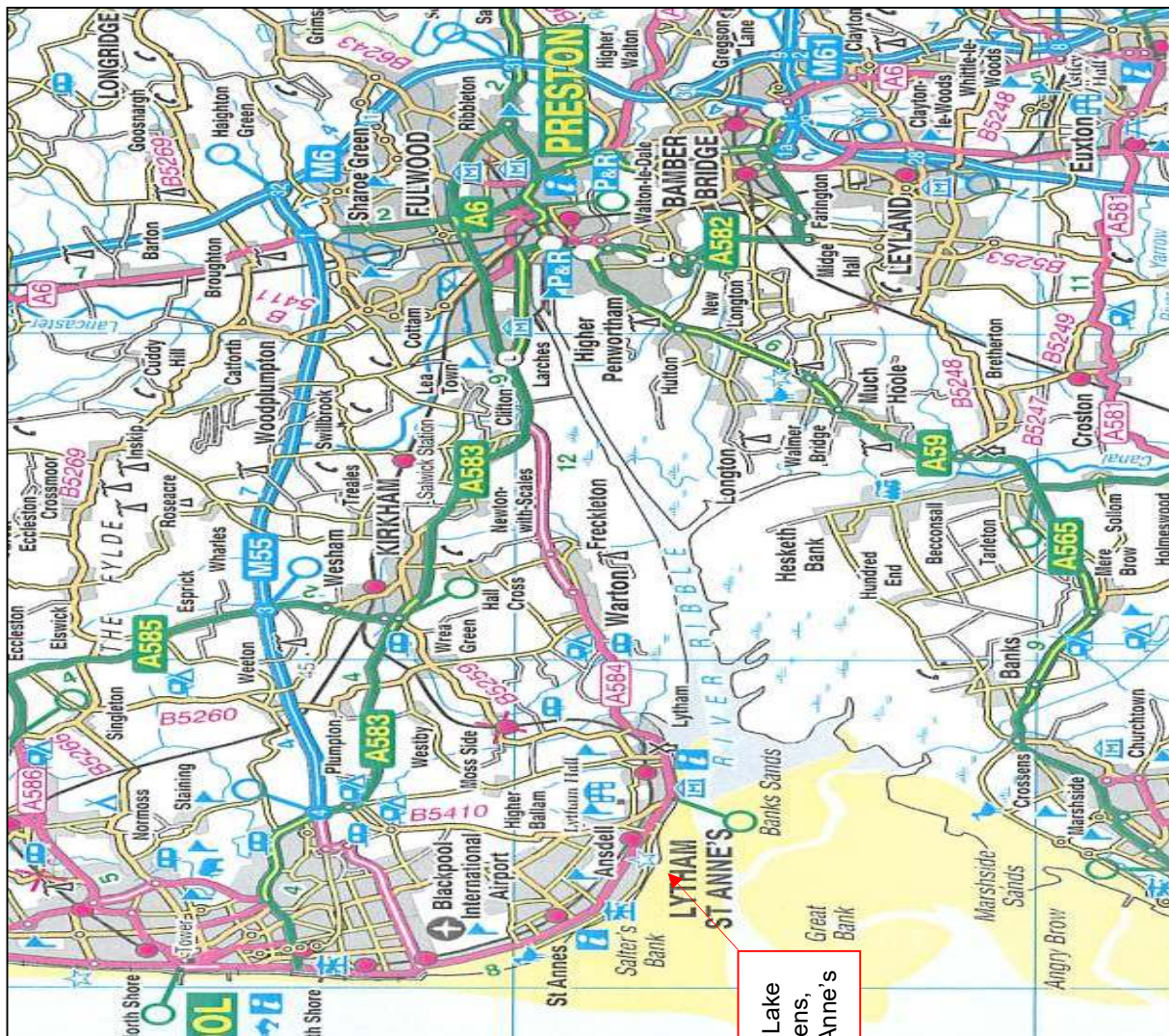
1.4 SITE DETAILS

1.4.1 Location

Fairhaven Lake and Gardens are situated in Lytham St. Anne's adjacent to the Ribble Estuary. See location map on following page. The site's address is shown below:

Fairhaven Lake and Gardens
Fairhaven
Ansdell
Lytham St Annes
Lancashire
FY8 1BD

Fairhaven Lake and Gardens is a popular and well-used facility catering for both visitor and local residents. It is located in Lytham St Anne's adjacent to the Ribble Estuary, an internationally important area for birds and nature conservation. There are a wide range of facilities available at the site including bowls, tennis, crazy golf, pitch and putt, basketball, skateboard park, children's playgrounds, picnic area and boating on the lake. There is also a café, shop, and the RSPB Ribble Discovery Centre.



1.4.2 Fairhaven Lake in its Borough context

Fairhaven Lake is one of the four main parks within the borough of Fylde. Along with Lowther Gardens it is one of the two main parks in Lytham, with Ashton Gardens and Promenade Gardens being the other two main sites in St. Anne's.

In addition to the four main parks the borough has 6 community parks, 6 sports and recreation grounds, numerous areas of public open space and civic space spread throughout the borough. Lytham Esplanade is the largest expanse of public open space in Lytham, but does not provide the range of facilities that are provided at Fairhaven Lake. The borough also has areas of urban woodlands and a large expanse of coastline, part of which has nature reserve status.

1.4.3 Summary of Attraction and Facilities

In summary the park offers the following attractions and facilities: -

- Children's play facilities
- Teenage/ youth focused actives
- Lake with boat hire
- Promenades and walks
- Toilets
- A café
- A shop
- Crazy golf
- Crown green bowling
- Skate and BMX park
- Lawn and hard surface tennis courts
- Basketball
- Floral displays
- Picnic area
- RSPB Ribble Discovery Centre

1.5 HISTORY OF THE SITE



The site covers an area of 19.5 hectares (including the lake) and was created in the 1890's by Fairhaven Estates Company

who had very grand ideas. The original intention was to



extend the sea wall and the gardens as far as St Anne's, however this was abandoned after heavy seas flooded the lake in 1896. The next twenty years were years of gradual progress. The sea wall was reinforced with sandstone rocks and the lake became more popular as Fairhaven itself began to develop. A landing stage and the Pagoda shaped boathouse were constructed. This was designed to contain living quarters for the Manager and an area where boats could be built. In 1926 at a cost of £34,000.00 the lake and surrounding park were bought from the Fairhaven Estates Company and presented to the Corporation of Lytham St Anne's by Lord Ashton of Lancaster. This is an aerial photo of the lake c.1930.



Fairhaven Lake has proved to be very popular with regatta, water skiing displays and hydroplane racing attracting crowds of up to fifteen thousand in the 1950's and 60's. More recently activity on the lake has declined although a new pleasure craft

"Jubilee" was launched in 2002 and provides lake cruises.

1.6 SITE OWNERSHIP, RIGHTS OF WAY AND DESIGNATIONS

The site is in the ownership of Fylde Borough Council. The site has no designations.

1.7 EDUCATIONAL VALUE

As a result of the heritage, culture and close proximity to the Ribble estuary, the educational value of the park is very high, not only for children and young people but of the wider community. The RSPB currently in partnership with

Fylde Council offers educational access to the fascinating Ribble estuary. The Centre has a large classroom and interpretative displays.

All the programmes are risk assessed, linked to the National Curriculum, and focus particularly on Science and Geography. Lancashire County Council has approved the Centre as a safe provider of outdoor education activities. A visit to the Ribble Discovery Centre will increase the public's knowledge of the environment through experiential learning and help them understand the value of wildlife and natural places.

The NLHF project will look to widen the education offer at Fairhaven to include links to the history curriculum for key stage 1 and 2. Led sessions will be delivered by the RSPB teaching staff and a variety of self-led resources will be available to download, covering the sites cultural and social heritage of Fairhaven.

The Coast and Conservation Ranger Service aims to utilise the gardens in the coming years to best fulfil its potential. The Rangers have and continue to plan and deliver outdoor educational sessions as well as activities and events for the public during the holidays. These have included planting and potting events, either for the development of the park or nearby Fylde Sand Dunes project; as well as fun, family, educational orienteering events which can introduce younger visitors to the gardens to navigation skills. The gardens are ideal and have been used for Easter egg hunts, and carving pumpkins for Halloween. There is also good potential for using the gardens for taught school groups that may choose to learn in the park, this has already been delivered to a local school with more planned. The Rangers have written and developed an Outdoor Educational Brochure that can be downloaded from the council website so Schools and the public can see what is available. The Rangers also promote all park activities on social media so the public know what events are coming up in the park.

1.8 SPORT & RECREATIONAL VALUE

The purpose of the park is very much about informal recreation, recreating how the park would have been used when it was originally conceived, strolling, taking in the views and vistas, decorative planting and lakes. It also

tries to balance the needs of modern day users and includes bowls, tennis, crazy golf, basketball, children's playgrounds, picnic area, skate park and boating on the lake. Within the last 12 months there have been health walks and buggy walks on the site. The Fairhaven Activity Development Officer has delivered a number of community engagement days and the lake has continued to be used for boating activities. The project is also looking to develop new clubs including a Stand-Up Paddleboard club.

The site also benefits from ample car parking provision. Not only does this serve the local community of Lytham St. Anne's as a major park, but also attracts a large number of visitors to the area.

This management plan seeks to ensure that the park not only retains its historical integrity, but provides wherever possible the demonstrated needs of the local community and its considerable number of visitors.

The site is situated in a highly accessible location, being between both Lytham and St. Anne's' town centres. It has its own car park and is easily accessible for pedestrians. The park assists greatly in contributing towards local tourism and its associated economic benefits, but is also an extremely important amenity resource for the local community. This amenity value has a significant impact on the quality of life for local residents.

1.9 DEMOGRAPHICS

An essential reference for compiling this Management Plan is the demographic information for the local area around Lytham St Annes and the wider community of Fylde. This information has assisted the authors in determining current and potential future community needs in conjunction with the consultation.

Below is a link to the research, which details the information for Fylde borough.

<https://www.lancashire.gov.uk/lancashire-insight/area-profiles/local-authority-profiles/fylde-district/>

1.10 STRATEGIC FRAMEWORK

1.10.1 General

This management plan is a site specific document compiled within the framework of a wider suite of strategic documents existing for the Local Authority and the local community of Fylde. In order to ensure appropriate synergy with these, all strategic documents have been researched and consultation undertaken as appropriate. A summary of the links between the Management Plan and other strategic documents is given below.

1.10.2 The Fylde Local Plan

The local plan provides an important protective framework for the site to assist in ensuring that it cannot be developed on for alternative use and the habitats within it are recognised and managed accordingly. This management plan takes account of these designations and seeks to ensure that the variety of environments in the site are protected appropriately. There are several policies within the Local Plan, which have direct effect on the site. The most relevant have been considered and the management plan supports the Local Plan framework in the following ways:

Nature Conservation

Although the site is on the edge of an SSSI, the Ribble Estuary an internationally important area for the conservation and study of birds, Fairhaven Lake and Gardens is an urban park primarily surrounded by hotels and residential housing. The gardens provide valuable green space in an urban setting that can be utilised by a variety of urban species.

Tree & Woodland

Trees are a notable feature within the borough of Fylde, areas within the gardens are formal and the structured landscape in which the trees provide and framework, highlight this as well. These trees provide much needed shelter from the prevailing winds which gust across the site.

Tourism & Recreation

The coastal resorts of Fylde Borough have for many years attracted large numbers of tourists and visitors. The area's parks and green spaces provide

important amenity benefits for local residents, assists in meeting the leisure and recreational needs of locals and visitors to the borough and contributes to the visual quality of the environment. For these reasons the Council will seek to protect them from any development.

1.10.3. Corporate Plan

The role that parks and green spaces play in delivering the Fylde Council's corporate objectives is recognised throughout the Council via the following arrangement.

The Corporate Plan is the council's main strategic document, it outlines the council's vision for a range of local services, together with the steps that it will take to achieve that vision. From this, departmental service plans are then developed and lead to individual staff personal development plans. The corporate plan contains a range of policies relating to the environment, community involvement and health and well-being.

The Corporate Plan is divided into 5 themes

- Value for money
- Clean & green
- A vibrant economy
- A great place to live
- A great place to visit

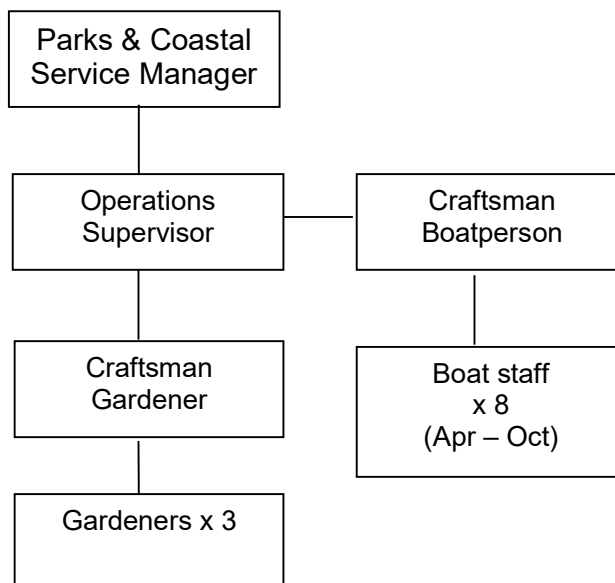
The Parks & Coastal Services team comes under the Clean and Green theme.

1.11 STAFFING STRUCTURES & RESPONSIBILITIES

The Council's Parks and Coast Service is ultimately responsible for managing the borough's parks and open spaces. The Parks and Coastal Services Manager encourages people to work in partnership with one another to provide an effective and responsive service. The Parks and Coastal Service deliver a holistic service which includes grounds maintenance, playground inspections and maintenance, arboriculture management, ranger service, conservation management and coastal patrol.

Fairhaven Lake and Gardens is maintained by a dedicated site-based team of skilled gardeners, who undertake all grounds maintenance and cleansing duties as well as the operation of the plant nursery. The team is managed by a Parks Operations Supervisor, who manages a range of operational teams across the borough and reports directly to the Parks and Coastal Services Manager.

Fairhaven Lake Team



The Tourism and Culture Service is responsible for parks development and works in partnership with the Parks and Coastal team to deliver park design and improvement schemes, floral display design and procurement as well as facility and infrastructure development and liaison with community and special interest groups.

1.11.1 Staff Training and Appraisals

Staff appraisals are undertaken as one of the Council's Performance Management Framework and the Fylde Competency Framework which is necessary to ensure that every employee is fully aware of their role and is

able to clearly understand their contribution to the authority and how they make a difference.

Every employee at Fylde must have an appraisal at least once a year. The employee appraisal is valuable in identifying the skills, knowledge and experience of every employee and represents an opportunity for the employee to review their own performance, set new targets for the future and discuss openly their strengths, ambitions and aspirations. Appraisals are essential to career development and are used by employees to ensure they have the opportunity to develop, to access training, to learn and to progress. The discussion must be recorded on the corporate format and signed off by both parties.

The Parks and Coastal Service have developed staff training plans which lists both mandatory and task based training for each individual member of the team, to ensure that the team skill base is kept relevant and up-to-date as well as to allow personal growth within the organisation. Training includes but is not exclusive to: corporate procedures and policies (iPool), IT, manual handling, health and safety, driving, operating machines and project management.

1.12 AERIAL PHOTOGRAPH OF GARDENS

An aerial photograph gives a good impression of the current layout of Fairhaven Lake.

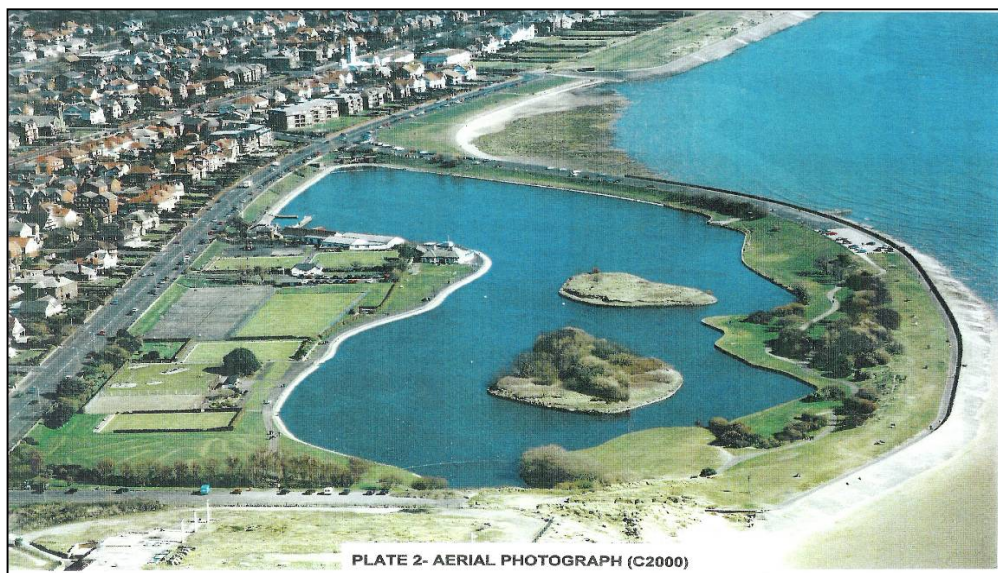


PLATE 2- AERIAL PHOTOGRAPH (C2000)

1.13 MISSION STATEMENT

Fairhaven Lake and Gardens are to be managed and maintained to meet the needs of the residents and visitors to a quality of which all can be proud. The park will appeal to young and old, where people with a diverse range of backgrounds can share its pleasures, its sounds and its colours, its light and shade, its contrasts of tranquillity and liveliness. This is a place where happy memories are made and stored, spirits are refreshed and nature can be enjoyed.

Welcoming Park



2.1 WELCOMING

Fairhaven Lake and Gardens is a popular tourist attraction and is also enjoyed by a broad cross section of the community and local residents. It is the only shallow marine lake in the area and has an attractive setting with views across the Ribble Estuary and the Irish Sea. There are four main entrances and several smaller ones well distributed. A distinctive concrete post and panel fence runs along the Inner Promenade frontage. The lake and gardens provide a strong sense of place that is welcoming with a relaxing peaceful atmosphere.

2.2 GOOD AND SAFE ACCESS

The site is situated in a highly accessible location, being between both Lytham and St. Anne's town centres. Access for the car user is excellent with large tarmac surfaced car parks at Stanner Bank and St Paul's Road with a smaller tarmac car park close to recreational facilities, all accessed directly off the Inner Promenade. The lake and gardens are also within easy walking distance of residential properties, Ansdell and Fairhaven Railway Station, Granny's Bay and the Promenade. All the facilities are easily accessible to all including disabled users.

Two bus stops are provided on Clifton Drive near the Fairhaven Hotel with public transport links to Lytham, St Anne's and Blackpool.

The gardens are well laid out with wide footpaths bordered by lawned areas which provide a sense of openness and good circulation throughout the park. The wide range of facilities and events ensure that the gardens are busy and popular with a good mix of age groups. Despite the large numbers of users, the gardens retain a peaceful atmosphere and there is very little evidence of vandalism or abuse.

2.3 SIGNAGE

The signs at Fairhaven Lake will be clear, informative and educational, as well as being suitable for the style of the site. The position of existing signs including 'finger posts' and possible new signs will be investigated. These will form part of a service signage strategy, and will contain the Council's website details. All new proposals will need to be agreed with the stakeholder group.

Signage will contain historical and environmental information and interpret how these affect the site facilities and management. These will prove to be useful and interesting to all visitors, but especially school groups.

The site already benefits from external tourism signs.

All signs are checked and cleaned, descaled and painted by the team as and when needed. Any new signs will be strategically placed to give maximum information. Their style and colour will suit the site. The installation of new signs is described on the action plan.

2.4 EQUAL ACCESS FOR ALL

The lake and gardens are generally somewhat lower than surrounding areas and ramps or steps provide a variety of access locations. The ramp from Stanner Bank car park is fairly steep and difficult for wheelchair users. It is recommended that the slope is made less steep or a new ramp constructed. Handrails are provided also alongside the steps. There is a wide meandering path around the lake and all facilities can be accessed by hard surfaced paths. Generous on site car parking is available and there is also on street parking on the Inner Promenade. Toilet facilities including disabled are provided and numerous seats and benches are located around the lake and in proximity to individual facilities. An inventory of all seating has recently been completed and a strategy for co-ordination and replacement is ongoing.

Windblown sand can occasionally block the footpath near the sand dunes at the western end of the lake. It is recommended that this is closely monitored

and cleared promptly. A disabled access audit has been undertaken for the buildings at Fairhaven Lake and Gardens on behalf of the Council.

2.5 COMMEMORATIVE BENCH SCHEME

Fylde Council has placed commemorative benches in peaceful areas throughout the borough. They are made from quality hardwood and are embellished with a bronze memorial plaque commemorating the names of those loved ones now departed.

The scheme is advertised on the Council's website, where it describes the benches. There are three styles of commemorative seats used throughout the



Lake's gardens. All have been chosen for their appearance, suitability and durability within our parks and open spaces. Although we have, in the past, installed Lion's Head benches there are no spaces left due to their popularity.

The two benches we now install are Stanford and Phoenix. Both have been chosen for their build quality, aesthetics, comfort and durability. The cost for the Stanford seat is £990 and £660 for the Phoenix Seat. This covers the cost of the seat and the plaque and any installation and administration costs. The scheme is non-profit making.

Healthy, Safe & Secure



3.1 General Health and Safety

Fylde Council's Health & Safety Manual details the organisation's responsibilities and arrangements. It is a working document which is regularly reviewed and amended to comply with any new legislations or other health and safety requirements. This document can be inspected upon request.

Copies of the manual are available to staff at all major offices and depots. The folders contain Risk Assessments, COSHH assessments, Safe Systems of Work and booklets, HSE leaflets etc. Example risk assessments are given in the appendices.

3.1.1 Risk Assessments

There are a number of steps taken to ensure that the Council has an effective and consistent approach to health and safety and risk assessment across all of the parks and green spaces.

Risk assessments are carried out for all maintenance activities within Fairhaven Lake. This involves the identification of risk and then the development of safe working procedures that will reduce the likelihood of the risk. These are incorporated within the Council's Health and Safety manual.

Event organisers are required to complete the generic risk assessment form, before and during the event in question. The initial form is submitted to the Parks Operational Supervisor.

3.1.2 Staff (general)

Extensive work has been undertaken to prevent staff suffering from H.A.V.S.; annual screening of permanent staff, screening new staff and seasonal workers prior to starting work, toolbox talks, work rotation, purchasing policy of buying low vibration equipment and annual renewal of higher vibrating equipment such as strimmers, and annual servicing of other equipment.

HSE leaflets INDG126 “Health Risks from Hand-Arm Vibration” and the pocket cards for employees “Hand-Arm Vibration Syndrome” have been distributed to employees.

Every member of staff, including management, has been trained in manual handling. It is a requirement that every seasonal member of staff is trained before starting the job. As the physical side of the job can be very strenuous, it is seen as essential that the work force is fully conversant with the theory and practice of safe lifting and handling of loads.

All manual workers are provided with basic H & S training which covers legislation e.g. Health and Safety at Work Act 1974, Risk Assessments and Correct Lifting Techniques. Training usually takes one day and is provided by Blackpool Council who are our overarching H & S provider.

The Parks & Coastal Service has a policy to protect the hearing of workers exposed to high noise levels. Grounds maintenance machinery can reach high noise levels which cannot be screened out.

There are control measures that we employ to protect workers as far as possible;

- A purchasing policy to provide quieter equipment
- Risk assessments to identify which operations pose a risk to hearing
- Employees exposed to noise are screened annually
- Hearing protection is provided to staff exposed to noise
- Training for staff is provided to staff exposed to noise

3.1.3 Depots

A first aid box will be supplied and kept in the mess room. At least one gardener is fully trained to use the kit, which can be used by other site users if necessary.

Accident / incident forms are available in the mess room. The person affected by the accident/incident completes the form, where possible. Failing this, the

Craftsman Gardener will complete the form and forward to the Operational Supervisor for further investigation. Once the investigation is complete, the findings are recorded on the Accident/Incident form which is then sent through to our H & S section for any further action.

3.2 SAFE EQUIPMENT

3.2.1 General

The children's play facilities meet both British and European Safety Standards. Gardeners carry out basic daily visual inspections and remove any hazards found. Fully qualified play inspectors do operational inspections on a weekly basis. The results of the inspections are entered into a play safe management system via a PDA so that the safety of the equipment can be assessed, and any defects dealt with.

The playground is popular, with a functional range of challenging and inclusive equipment, safety surfacing and seating. Perimeter fencing and a gate allows controlled access and prevents dog fouling in this area. Signage is provided at each access point which displays general information about the play area and emergency contact numbers.

3.2.2 Inspections

The site will be informally inspected for safety issues on a daily basis by the site based team as they undertake their daily tasks. These informal inspections will cover public and workplace safety, identifying and prioritising remedial works. Any defects will be reported to the Craftsman Gardener. Formal safety inspections will be undertaken weekly by a qualified play inspector. Any defects will be recorded on a site inspection form, via a PDA, and remedial works will be prioritised and programmed.

Formal safety inspections are undertaken in accordance with Health & Safety guide lines in the form of routine weekly, quarterly operational and annual independent inspections, any defects are recorded on a secure data base, via

a PDA. The PDA system is linked directly to the council's play inspection management system, where all the remedial works are risk assessed, prioritised and programmed.

It is also important that officers and operatives constantly liaise with other partners such as user groups, concessionaires, other Council departments and the Emergency services to create a coordinated approach to site safety and security.

3.3 PERSONAL SAFETY IN THE GARDENS

Grounds maintenance staff are the first point of contact for users and they can easily be identified by their uniforms and name badges. They are trained to assist people with their enquiries in a helpful and friendly manner. A public telephone is located in the RSPB centre.

As well as the physical safety features of the gardens the Fylde Community Safety Partnership is pro-actively involved in reducing the already low levels of crime, anti-social behaviour and fear of crime within the gardens and surrounding area. The 2018 to 2021 Community Safety Strategic Assessment has been produced following a detailed audit and partnership consultation.

The Community Safety Action Plan concentrates on several priorities such as anti-social behaviour with an over-arching aim to reduce crime and disorder, which includes parks and open spaces and provides positive and diversionary activities for young people. A partnership approach to deal with incidents within parks is overseen by the Community Safety Partnership.

The local Police Community Beat Managers, who have responsibility for the gardens, also meet with the Partnership team on a regular basis to ensure that park security is being maintained.

3.4 CCTV

We have a small network of cameras around the borough which are classed as 'rapid deployment' cameras which record 24/7. They can be moved around

when required and footage can be downloaded by the Police from the two CCTV vans they operate.

3.5 DOG CONTROL

Dog walking is a popular activity within the gardens. Fairhaven Lak & Gardens is covered by a Public Space Protection Order (PSPO) that prevents owners from letting their dogs foul and exercise their dogs off their leads in sensitive areas such as playgrounds or sports areas. Where this becomes a problem, the Dog Wardens or Rangers are brought in to deal with the situation. Dog fouling, however, tends not to be a problem in the gardens.

The Dog Warden Service undertakes the Council's statutory obligations:

- Stray dogs
- Enforcement
- Aggressive dogs
-

Any complaints about dogs will be responded to as quickly as possible, but always within two working days

3.6 GEESE FOULING

Fairhaven Lake and Gardens are home to a large number of Canada Geese. Increases in the Canada Geese population have resulted in problems in fouling on footpaths and grass areas. The Council have responded with increased frequency of footpaths cleaning and by erecting signs requesting that the public do not feed the birds. The cleaning of grass areas is less effective as smearing occurs. Information has been obtained from the RSPB and the Department of the Environment, Transport and the Regions (DETR).

An integrated approach is required to tackle the ongoing problem with consideration of the following:

- Fencing on the northern shore of the lake to prevent the geese from congregating in favoured spots.

- Planting of trees and shrubs in grass area to make them less attractive to the geese.
- No feeding signage at regular intervals along the northern edge of the lake.
- The capture and re-homing of all domestic fowl. This can be done without a licence but there is sensitivity with residents and regular visitors.
- Council staff / RSPB employees and volunteers to effectively deliver information to visitors regarding feeding and other environmental / conservation topics.

3.7 APPROPRIATE PROVISION OF FACILITIES

We will ensure that Fairhaven Lake provides the right facilities to the community by a series of user and non-user surveys, demographic information, constant partnership management and regular stakeholder meetings.

We will undertake quarterly meetings with all stakeholders to ensure that all information is shared and that progress against the agreed site objectives is being made.

Public expectation and request for facilities will be outlined in the numerous user and non-user surveys. This information will be collated and used to lead the stakeholder group on future facility provision. These requests will be put onto the action plans.

The Parks & Coastal Services management team understand and feel responsible for ensuring that any proposals regarding future provision are what the users want and that they suit the style of the Lake and Gardens.

3.8 FAIRHAVEN LAKE BOATING SERVICE

The Parks & Coastal Services team manage the community boating service at Fairhaven Lake. The Council have replaced the old timber fleet with a range

of new fibre glass craft that have proved very popular with service users and have also reduced the running costs of the service making it more sustainable. The new vessels are fully compliant with all Health & Safety legislation. There are currently 15 fibre glass motorboats, 3 original 'teak' motorboats, a passenger launch for taking out larger parties / schools etc. and a range of non-motorised craft such as rowing boats and canoes. This service is managed by the Boat Service Craftsman, who leads a team of agency staff throughout the summer season. Agency staff prove to be flexible as the service opening times can fluctuate during bad weather.

The Lake also serves several boating clubs such as the sea scouts and Ribble Cruising Club who use the lake for training and boating exercises. These clubs work closely with the Sports Development Officer and are currently working on a joint funding bid to develop the 'dry' facilities such as a new classroom and changing rooms to achieve Royal Yachting Association status.

Other formal recreational facilities on the site are also provided including bowling, tennis and mini golf, which are also managed by the boat service team, who operate the ticket office.

Well Maintained & Clean



4.1 LITTER AND WASTE MANAGEMENT

The general cleanliness of Fairhaven Lake is kept to a very high standard. Cleansing activities such as litter picking, sweeping paths and emptying of bins is programmed as a priority on the teams work sheets described below. The site based team is on site every day and ensure that the gardens are kept clean. Litter bins are numerous in the gardens and are well used by the park users. The site is litter picked daily, the bins are emptied daily and the paths swept weekly. There is a robust weekend rota for litter picking and bin emptying during the season (May-Oct).

Furniture is regularly inspected and will be cleaned by the team when necessary.

All litter, cans, glass and detritus are disposed of in the Euro bins and recycling bins that are housed on site near the car park, and are emptied by the Cleansing team on a regular basis.

The management of the green waste and arisings is fully described in the sustainability section. All green waste is kept on site, composted and used as soil conditioner in the gardens.

The Friends of Fairhaven Lake group have elected to assist in various maintenance tasks including bulb planting and work with various community groups and schools to improve the site, this encourages an investment and sense of ownership. This is to serve as an aid to the gardeners, not a replacement.

4.2 HORTICULTURAL DESIGN & MAINTENANCE

Fylde Council's Parks & Coastal Services team undertakes all the operational maintenance tasks in Fairhaven Gardens – including grounds maintenance.

The gardeners follow detailed monthly task sheets which specify the maintenance to be undertaken and frequency. The Craftsman Gardener and Supervisor ensure the quality of operations are undertaken to a high standard as well as to the correct frequency. A sample monthly task sheet is provided within the appendix.

Fairhaven Lake and Gardens supports a significant range of horticultural displays including informal shrubberies, perennial and grass borders to year round formal bedding and floral containers. The seasonal bedding includes spring and summer displays of plants and bulbs. Due to the nature of the site, the bedding displays are centred around the most frequently used parts of the Lake's gardens. All the bedding schemes are designed by the Parks Development Officer in conjunction with the site Craftsman Gardener.

Planting plans have commenced to replace borders in need of renovation and phased plantings continue to sustain and further improve the 'horticultural excellence'. Planting designs takes into consideration the heritage value of the original plans laid out by Thomas Mawson.

The community gardening group led a research project on the original planting plans laid out by Mawson and the current planting schemes on site. The results of this project will be used to help develop the landscaping plans for the NLHF project. The research can be made available on request.

There are significant horticultural features in addition to the seasonal flowerbeds, within the park including herbaceous and shrub borders. More recently planted beds have been designed specifically to increase the range of horticultural interest through all seasons.

A community nursery is being developed on site. There is currently a polytunnel on site which the community groups will use to propagate plants that can be used in planting schemes on site. Raised beds will also be constructed and composting facilities and water butts will be installed.

The aim of the nursery is to ensure Fairhaven has a sustainable supply of plants and also create training and development opportunities within the community. The group will be supported by local organisations including Fylde Community link, offering adults with learning disabilities to contribute to the park.

4.3 ARBORICULTURAL MAINTENANCE

The Parks and Coastal Service team is responsible for managing and maintaining the Council's tree and woodland stock, with the exception of highways trees which are under the management of Lancashire County Council.

Key staff include a Tree Officer in the Planning Service and an operational team of two arborists within the Parks and Coast Service.

The Council has recently developed a Trees and Woodland Strategy which sets out key corporate aims and objectives for the protection, management and development of trees from 2018 – 2024. An operational action plan will be developed alongside the strategy in 2019 to ensure its delivery. The action plan will include tree planting and woodland development proposals as well as proactive arboriculture maintenance to protect and enhance the existing tree stock.

The operational arboriculture team undertake annual tree surveys, record tree condition and grade risks. The outcome of the surveys feed into a proactive annual arboriculture work programme in which they deliver at the appropriate times.

The Council wants to improve our tree inspection and work programme in 2019 through adopting arboriculture specific software and handhelds to make the process more efficient and reliable.

4.4 BUILDING & INFRASTRUCTURE MAINTENANCE

Fairhaven Lake & Gardens contains a range of public facilities with associated equipment including, children's playgrounds (infants and junior), skate park and tennis courts.

All park play, sport and recreational facilities are inspected and maintained by a dedicated Play Inspection team within Parks & Coastal Services. The team consists of two qualified play inspectors who inspect all equipment weekly, record findings on handheld devices, give findings a risk rating and set work programmes for repairs and proactive maintenance. Independent

ROSPA playground inspections are organised annually to serve as a quality benchmark for staff. Play, sport and recreational facility design and developments – including the refurbishment of playgrounds - is led by the Parks Development team.

Fairhaven Lake & Gardens also contains a range of heritage buildings and structures including pavilion and shelters, café, RSPB building and numerous depot buildings. All buildings and structures are inspected and maintained by the Council's Technical Services team on an annual basis.

4.5 EQUIPMENT MAINTENANCE

The park contains a range of play facilities, serving children from toddlers to teenagers. These include:

- Fixed play equipment for toddlers
- Fixed play equipment for juniors
- Grass tennis courts
- Bitmac tennis courts
- Multi-Use games area
- Crazy golf
- Skate park

All these facilities are the responsibility of the Parks & Coastal Services team. The play equipment is inspected by a Playground Inspector as described above. The majority of repairs are carried out by the play area team, with any specialist repairs undertaken by an external contractor.

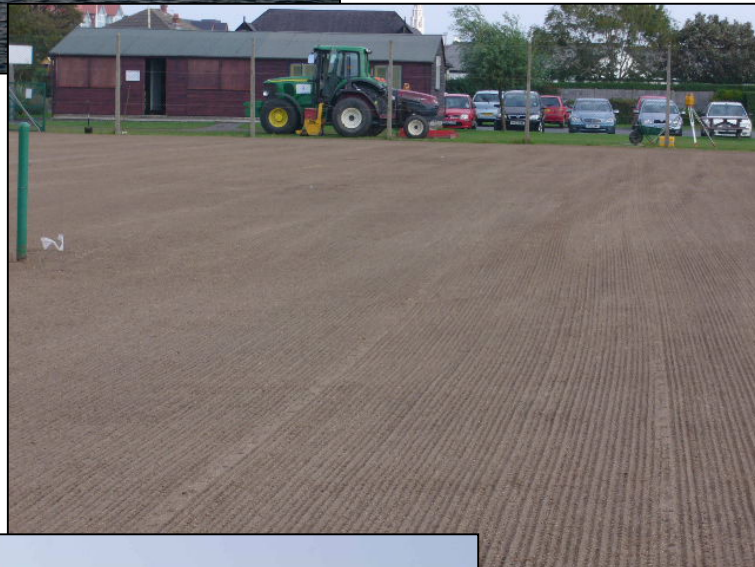
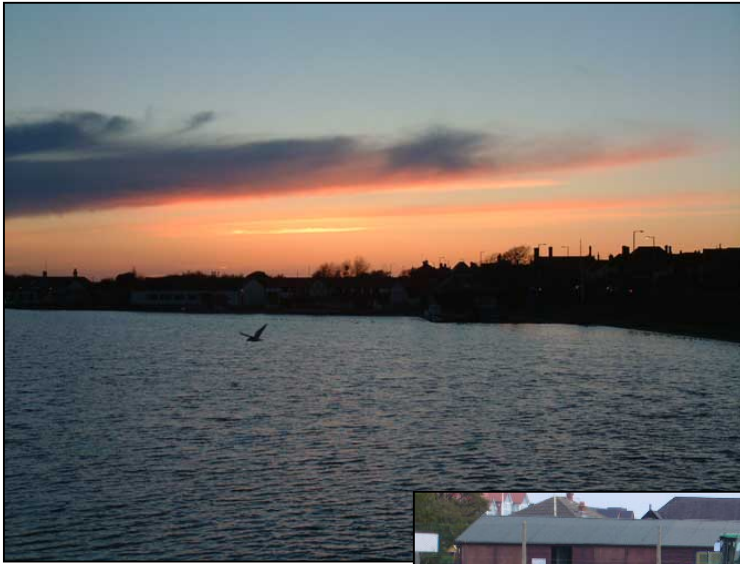
4.6 DEALING WITH GRAFFITI AND VANDALISM

The level of graffiti and vandalism is recorded and shows that it is very low in the gardens. A summary of our removal/repair policy is given below:

Vandalism and graffiti will be reported as soon as offences are discovered and any necessary action taken according to the seriousness. All obscene graffiti is removed within 24 hours by the gardening staff. Non-obscene graffiti is removed within 48 hours.

Vandalism, again, is dealt with by gardening staff if they are able to do so e.g. smashed glass, upturned litter bins etc. Matters of a more serious nature are reported to the relevant person e.g. broken windows to Technical Services who then have someone on site as soon as possible to repair or make safe any damage.

Environmental Management



5.1 MANAGING ENVIRONMENTAL IMPACT

The Council has an Environmental Policy that is available to view on request. The policy document outlines key ways in which the Parks and Coastal Service team can minimise its environmental impact in the delivery of its operations:

- The promotion of environmental issues through the Fylde in Bloom Initiatives, such as tree & bulb planting with the scouts and local people.
- Minimising water consumption by the use of baskets and planters with reservoirs, and automatic irrigation systems for fine sports turf and hanging baskets.
- Minimising energy consumption by ensuring our fleet is well maintained and utilising the appropriate choice of fuels. This also reduces pollution from our activities. Carry out 'Green Fleet' assessment.
- Recycling initiatives such as composting and recycling all green waste.
- The creation and protection of wild flora and fauna habitats, through thoughtful management and sympathetic maintenance regimes.
- Minimising the use of herbicides, through utilising other methods of weed control.
- Protecting the environment through for example Tree Preservation Orders and tree replacement programme.
- Minimisation of waste and litter through appropriate management regimes. All green waste to be shredded and composted.
- The strategy will encompass an initial 5-year period. In order to ensure success is continuous and sustained an annual review will be undertaken.
- Increasing environmental awareness of all staff.
- Increasing environmental interpretation and access to information through informative signage, leaflets and website.
- Continue to work in partnership with environmental partners and stakeholders such as the RSPB, Lancashire Wildlife Trust, English Nature and schools etc.
- Recycling of timber and bark chippings from Arboriculture works.
- Ensuring that all other green waste goes to the green waste station and not to landfill.

- Christmas tree recycling scheme in partnership with the Waste Minimisation Officer.

All activities in grounds maintenance operations have been re-evaluated with a view to make our actions more sustainable including:

- Composting and recycling of green waste on site, and the reuse of this reducing in travelling to and from site.
- A new clear maintenance regime for the compost. The green waste will be mixed and shredded into the compost bays. A balance of greens and browns will be maintained and the compost will be turned every six weeks. Greens will include grass clippings, spent bedding plants, flowers, etc. and Browns will include leaves, shrub prunings, spent perennials etc.
- A new shredder has been bought, so that all green waste can be shredded to reduce the bulk material down from 10 to 1, to allow for total composting on site.
- The composted materials will be used as a soil conditioner on the site.
- Separate euro bins are on site to take non green waste such as glass, tin cans, litter etc. These will be emptied on a two week cycle.
- Minimal use of peat (see below)
- Water usage reduction
- Minimal herbicide use (see below)
- Any hard landscaping materials that can be reused on the site will be reused.
- Annual bulb planting schemes
- New planting schemes to incorporate perennial planting and wildflowers instead of summer bedding.

Differential mowing regimes and wildflower planting areas around the perimeter of the park to reduce grass cutting are being considered.

The vehicles and large plant will form part of the 'Green Fleet' assessment. All smaller machinery has now been put onto a regular replacement programme. For example, the number of strimmers has been reduced and the remaining ones are replaced annually. This ensures less pollution and makes them safer to use.

Recycling bins have been placed adjacent to the car park area to encourage public and user recycling.

Each year the council carry out a Christmas Tree Recycling Scheme, with a collection point at Fairhaven Lake. The service is free to the general public and always receives a good response. Advertising before Christmas is carried out in the local press as well as being included in the councils recycling guide, which is issued to all residents. Some of the trees are shredded and used on footpaths and others for sand dune conservation work.

5.2 CHEMICAL USAGE

Fylde Council adheres to guidelines currently outlined in the UK Pesticide Strategy (HSE) in utilising pesticides safely and within legislation as well as regularly review our products against the Pesticides Register of Authorised Products. Pesticides will only be used where it will result in tangible benefits and will not cause irreversible environmental damage. Pesticides are also only used when there is no viable, cost effective, less harmful alternative.

We have developed departmental pesticide best practices in the maintenance of our parks and green space. This includes:

- Protecting users and workers by minimising exposure to pesticides;
- Protecting residents and bystanders by minimising exposure from spray operations;
- Reducing water pollution caused by pesticides;
- Reducing the impact of pesticides on biodiversity;
- Minimising the risk to users and the environment;
- Encouraging the introduction of cost effective, more sustainable alternative approaches and greater use of integrated pest management (IPM).

We have evaluated what controls are really required and factors such as site location, soil type, frequency and type of use influence the level of management and inputs such as pesticides and fertiliser used are considered.

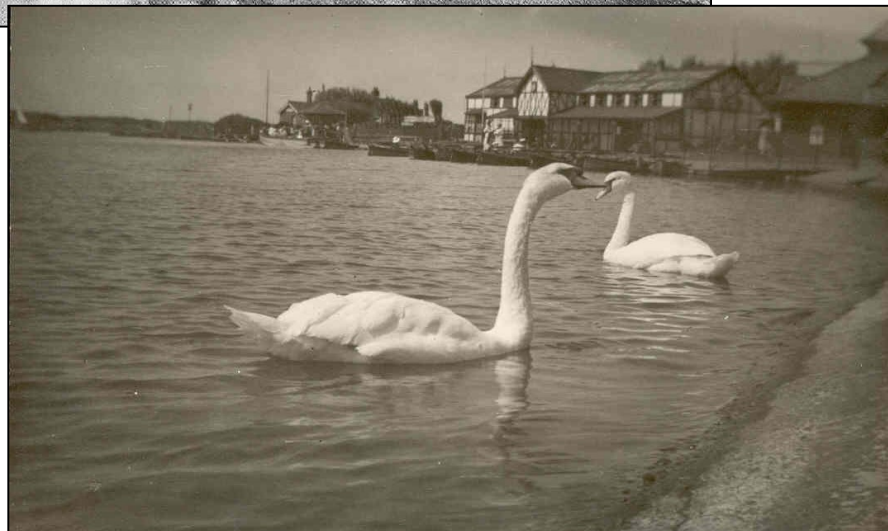
5.3 PEAT USE

The Council is actively seeking ways of reducing the use of peat, or products that contain peat.

“Peat should not be used in landscaping, horticultural or gardening work carried out by the Council where suitable alternatives are available”.
(Environmental Strategy, Fylde Council).

The Parks & Coastal Services management team understand the need for peat minimisation, and are actively managing the reduction in the use of peat throughout the service.

Biodiversity, Landscape & Heritage



6.1 BACKGROUND

Fairhaven Lake was created in the 1890's by Fairhaven Estates Company. The original intention was to extend the sea wall and the gardens as far as St Anne's, however this was abandoned after heavy seas flooded the lake in 1896. In 1926 at a cost of £34,000 the lake and surrounding park were bought from the Fairhaven Estates Company and presented to the Corporation of Lytham St Anne's by Lord Ashton of Lancaster.

6.2 MANAGEMENT OF NATURAL FEATURES, WILD FLORA AND FAUNA

Ordinance Survey maps of the 1850's show the area now occupied by Fairhaven Lake and gardens as a shingle / sand spit known as The Stanner with tidal inlets and sand dunes behind. The present sea wall follows the line of the original stanner and all the original natural features have been destroyed.

The lake and gardens are managed as parkland and although this habitat does have some value, mainly to birds, butterflies and rabbits, its importance for wildlife is very small in comparison to the Dune and Estuarine habitats nearby. The Ribble Estuary is of international importance for wildlife with up to 250,000 birds being present at peak.

The dune habitat to the west of the lake opposite AKS School is a Site of Special Scientific Interest (SSSI) because of its geological interest. Its botanical interest is also high due to the presence of rare orchids.

The Ribble Discovery Centre at Fairhaven Lake is a well-equipped visitor centre run by the RSPB in partnership with and Fylde Council to promote awareness of the natural environment.

Opportunities for habitat enhancement and diversity are to be investigated including the planting of native wildflowers, shrubs to attract butterflies and

tree planting together with an integrated strategy to control the Canadian Geese. The RSPB has provided several bird nesting boxes which have been placed in suitable locations in the gardens.

The lake and gardens are within an urban area but has linkages with the other significant open spaces throughout the Fylde area, as well as countryside and the coast and duneland, which are literally a few metres away.

The site is quite uniquely situated in between the sea wall and the urban settlement of Ansdell. It is a mixture of formal and informal landscape as it was laid out in the 1890's. It plays a huge role in providing a managed facility that acts as a 'viewpoint' into the Ribble Estuary. The site is home to a diverse wildlife such as birds, small mammals and invertebrates.

The Parks & Coastal Services team are due to undertake a vegetation assessment and restoration plan with regard to the soft landscape, in particular the shrub borders and seasonal bedding displays will be assessed. The aim is to restore and regenerate the planting on the site, relative to its location, to give a more diverse and interesting variety of flora that will improve seasonal interest and attract a wider diversity of fauna.

The gardens support a variety of wildlife including birds, mammals, insects and invertebrates as evidenced in the Phase 1 Habitat Survey carried out by Lancashire Wildlife Trust. In total 159 different species of plant were recorded. The survey also identified 16 species of fauna including. Habitat surveys often include target notes. Target notes describe features of ecological interest from a biodiversity, ecological and wildlife perspective. The previous 1991 habitat survey did not record any target notes for Fairhaven Lake and Gardens. However, the habitat survey gives three target notes made during the survey visit. A copy of the habitat survey is available on request.

The rockeries spread throughout the site provide shelter for small creatures, which like nooks and crannies, such as hibernating newts, hunting spiders and bumblebees.



Large areas of the grassland around the perimeter of the gardens will undergo a bulb planting project throughout the autumn. The grass will be left longer, and will be planted with a mix of naturalised bulbs. The scheme will include the planting of around 7000 –

9000 bulbs by the gardeners and the community.

6.3 CONSERVATION OF LANDSCAPE FEATURES, BUILDINGS AND STRUCTURES

The construction of Fairhaven Lake and Gardens was a major undertaking by the Fairhaven Estates Company in the 1890's. The Fairhaven Lake Reunion Newsletter reports the lakes history as follows:



The Fairhaven Estate Company had very grand ideas. Fairhaven was to be laid out in curved crescents rather than streets and a huge lake was to be formed which would stretch from Granny's Bay to what is now the miniature golf course at St. Anne's. The idea was to build up to stanner with earth and rocks and block off the inlets to keep the tide out. However, their grand plan for Fairhaven had to be abandoned through lack of money, but one bit of it that was carried out survived and that bit is what we now know as Fairhaven Lake.

To construct the lake the stanner of shingle and sand had to be reinforced and the tidal inlet closed. Railway lines were laid and horses dragged iron skips along them. Steam shovels were used on the site, but much of the work was carried out by wheelbarrow and spade. Hundreds of tonnes of earth and rock were used. Inlet pipes and sluice gates were laid down at the St. Paul's Avenue end so water could be drawn in from the sea to fill the lake when necessary. An open-air swimming baths was constructed complete with diving boards, changing huts and a slide. Hundreds of tonnes of earth were dumped on the promenade site and grass was grown. The lake itself was

confined to the seaward side and was narrower than it is today. There was a football pitch between the baths and the wall.

As the lake was deepened the excavated stones and sand were used to form islands. A bridge was built to link the islands at the St. Paul's Avenue end with the newly seeded area, which was to be laid out as a golf course. With a golf course and a boating lake the Fairhaven Estate Company hoped to attract people who would buy the land and houses in the area of Fairhaven which they were about to develop.

In year 1895, an important one, boats began to appear on the lake. There were no buildings at the time and the boats were pulled out of the water onto the grassy banks. A large yacht was purchased and a boatman took families for sails up and down the lake. A railway line appeared upon what is now known as the Inner Promenade and its foundations were laid. However, the most important development was the completion and the opening of the Fairhaven Golf Clubs new course. A clubhouse appeared by the side of the lake. It is still there now in the form of the Lakeside Café. The fairways extended over the land where AKS School stands today, crossed Clifton Drive to where the Clifton Hospital stands and swung back towards the lake over what is now Denford Avenue. Meanwhile the first street and homes were being laid down once the sand hills had been cleared.

The year 1896 brought disaster. One night the members and the stewards were in the golf club when water rushed in from all sides. A very high tide, whipped up by a strong wind had broken through the earth works above the stanner. There was nothing for it



89 Fairhaven Lake and Golf Links after the sea broke through the sea wall during a storm on 6 October 1896. The photograph was taken from opposite St Paul's Avenue, looking towards Lytham. The golf club's bungalow is in the distance; the railway track to the left is now Inner Promenade. The club subsequently moved; the bungalow later became the Lakeside Café.

but to flee from the clubhouse and reach the rising ground where the promenade is now, or drown. The salt water reached the roof of the clubhouse and ruined all the equipment inside. The clubhouse was abandoned and the club set itself up at number 1 St. Paul's Avenue, which

had just been built. The Fairhaven Estate Company had to once again set about reclaiming the land from the sea.

The next twenty years were years of gradual progress. The seawall was reinforced with sand stone rocks and the lake became more popular as Fairhaven itself began to develop. A landing stage and the pagoda shaped boat house were constructed. This was designed to contain living quarters for the manager and are where boats could be built.

The people appointed to run the lake converted the larger of the two islands into a miniature farm, which they reach by the bridge.

Meanwhile King Edward School and all the avenues leading to the lake had been built. A private tennis club, bowling green and public tennis court appeared on the lakeside. Flowerbeds were laid out and the whole park began to take shape.

The early 1920's saw two changes. The baths at the St. Paul's Avenue end closed after a tragic accident in which a young man broke his neck after diving in. Then in 1926 at a cost of £34,000 the lake and the surrounding park were brought from the Fairhaven Estates Company and presented to the Corporation of Lytham St. Anne's. The generous donor was Lord Ashton of Lancaster who had made a great fortune out of the manufacture of Linoleum. Apparently he was showing how grateful he was for all the pleasures the resort had given him.

- Fairhaven Lake and gardens retains many of its historic buildings and landscapes.
- The Southern lake shore line has been modified and is now less indented.
- The Japanese garden located on the southern shore of the lake towards the western end has been filled in and grassed over.

- Tree cover appears more extensive on the earlier photograph and much of the grass land more dune like

The gardens are designated as a conservation area in the Local Plan.

Features of particular conservation importance include:

- The lake and islands
- Historic shelters
- Mature trees
- Original retention of the landscape
- The wider landscape setting
- The pagoda style RSPB centre

The existing tree provision for the site has been added to over the many years of the sites development, giving a varied and haphazard tree structure in age, species and position.

6.4 HERITAGE LOTTERY FUNDING BID

- Historic Fairhaven Lake and Gardens, originally built in the late 19th Century and further developed in 1923, is the “jewel in the Fylde Coast’s crown”. Millions of people have enjoyed visits to the 17-acre site.
- Designed by renowned landscape architect Thomas Mawson, the lake and gardens remain a classic gem. Mawson’s design included an extension of an existing lake to form Fairhaven marine lake. Sailing regattas used to attract very large crowds.
- The marine lake and adjoining estuary are important sites for overwintering birds - the Ribble Estuary is designated as a Ramsar site, Special Protection Area and SSSI. The RSPB’s Ribble Discovery Centre is based at the lake and is an important resource for visitors and residents.
- The site remains largely complete, but poorly located new facilities and, in places, some inappropriate planting of hedges, have partly obscured the original layout.

- Arrangement of garden and activity areas, such as bowls and tennis, remain. The original “Japanese” rock and water garden is buried but is known to be intact following a community archaeology project and has been included for restoration.
- In December 2018, Fylde Council secured a £1.47m grant from the Heritage Fund for the restoration of Fairhaven Lake and Gardens. This is to match into a wider funding pot of circa £2.5m to complete the entire project.
- The proposed restoration works can be categorised into 4 main areas:
 - Heritage Buildings restoration
 - Landscape works; both historic restoration and contemporary development
 - Lake restoration and Civils works
 - Activity Development and Interpretation
- The project, guided by audience research, aims to restore the historic character of the lake and gardens in line with Mawson’s design and to increase the range of activities.
- Key features of building works include:
 - External and internal restoration of pavilion café building (original 1896 golf club house)
 - Internal development of the current Isaac Dixon Boathouse (1920’s) to create a water sport centre to facilitate increased activity, match funded by Sports England.
 - Restoration works to the Pagoda Building (1901) which is currently home to the RSPB Ribble Discovery Centre to enable a wider range of park heritage interpretation and act as main welcome centre to the park.
- Key features of the landscape works include:
 - Improved facilities for tennis and bowls;
 - Changed planting to restore historic vistas;
 - Restoration of the Japanese Gardens
 - Creation of full perimeter pathway
 - Forest School Island and Winter Bird Roost
- Key features of the lake works include:
 - Lake dredging and aeration

- Lake edge innovative pilot projects
- Reconstruction of the Lake Inlet/Outlet (courtesy of the Sea Defence Project)
- Key features of the Activity and Interpretation include:
 - Information points around the gardens to highlight the historic importance of Mawson's design and highlight the site's international importance for wildlife;
 - Education offer expanded in partnership with RSPB, AKS and others
 - Increased volunteer activity – in partnership with FOFL and UR Potential
 - Significant increase in water-based activity – kayaks, canoeing, sailing, windsurfing, open water swimming
 - Arts/Crafts/workshop activity delivered by private partners with links to hard-to-reach groups

Annual events programme to include outdoor theatre, performance arts, sailing regatta and much more.

6.5 SEA DEFENCE WORKS

- The site's coastal boundary is formed by the promenade which separates the lake from the sea. The original sea wall was constructed in the 1890's, and was time expired and failing.
- The Council and partners (Environment Agency) are currently reconstructing the promenade and sea defences, and the car park between the lake and seawall.
- The seawall is being replaced to prevent the sea flooding the lake and its amenities, and to help prevent coastal flooding and erosion over the next 100 years.
- Plans for the site are part of a wider Coastal Masterplan along Fylde's section of coastline. A major theme is heritage-led regeneration for the borough's historic parks and gardens and the Grade I Lytham Hall (the Council has granted some funds to the Hall project).

- The replacement of the sea wall and promenade, and the restoration of Fairhaven Lake are regarded as catalysts to encourage further regeneration of the coastline.
- The contract to complete the design and construct the new £22m sea defences was awarded to VBA Joint Venture Ltd in October 2017. The 1km stretch of Fairhaven sea defences is planned to be completed by April 2020.

Community Involvement



7.1 Friends of Fairhaven Lake & Gardens – (FOFL)

Friends of Fairhaven Lake (FOFL) held its inaugural meeting on 6th May 2016, following a number of discussions with interested volunteers who alongside the council had identified the need to establish a new, active and ambitious friend's group. It has now grown to a proactive group of 40 members including local residents, park stakeholders and park business owners.

FOFL's aim as a group is to promote and develop the use of Fairhaven Lake, its surrounding parkland and its historical, ecological and horticultural values, to improve access to the lake for all parts of the community and to encourage wider participation in organising and developing its many features. Their objectives are:

- To assist with current and developing projects that will improve the Lake including promoting and forwarding ideas for development of amenities and attractions.
- To raise funds to ensure sustainability of the group through events that may take place on or around the lake.
- To encourage wider community participation in organising the parkland.
- To act as the focus for community views on issues relating to the use and development of the lake and its surrounding parkland.
- To raise awareness of the parks rich heritage and history by carrying out outreach talks to local interest groups and running heritage activities within the park.

At the time of FOFL's formation the outcome of the NLHF bid was unknown and so the group identified areas that they felt were pivotal to the sites ongoing improvement such as the inclusion of a DDA compliant pathway all the way round the site, the de-silting of the lake and the resurfacing of pathways and play surfaces. Also the renovation of the former Japanese Garden was seen as an important piece of the sites heritage and that its restoration should be prioritized.

The group were consulted as part of the NLHF bid submission and continue to support the project to further refine elements of the delivery. The group also support ground level improvement activities and the NLHF event program.

7.2 NLHF Volunteer Groups

On the success of receiving stage 1 funding for NLHF Fairhaven restoration project, an NLHF volunteer group was created to increase the volunteer opportunities at Fairhaven and create a higher community buy in for the lake and the project.

A number of different groups were set up covering a variety of roles and activities.

UR Potential - Fylde Council commissioned youth organisation UR potential to complete a 3 month young person consultation project. This project set up a working group of youth volunteers that will consult with young people on their views on activity at Fairhaven and design features. The groups that will be targeted by the consultation include schools, uniformed groups, community groups and hard to reach groups such as LGBT. This group has continued and has now formed the Fairhaven Lake Youth Council, the group help to develop design within the project and carry out ongoing peer consultation.

Community Gardening Group – The groups aim is to support the parks team in developing Fairhaven’s gardens and complete additional work to ensure the high levels of maintenance around the site. It also helps to encourage community pride in the park and gives residents an opportunity to be actively involved in the development of the area. This group have extended their remit to now help manage the sites community nursery, the aim of the nursery is to ensure Fairhaven has a sustainable supply of plants and also create training and development opportunities within the community. The group will be supported by local organisations including Fylde Community link, offering adults with learning disabilities to contribute to the park.

Park Ambassador Scheme - The scheme involves volunteers being trained and then act as tourist information, support and interpretation around the park. Volunteers will be on duty within the park in 2's and will be armed in Fairhaven uniform and with a tablet to access information and have electronic visitor surveys.

We will be starting the training sessions towards the end of January with the hope that we start on site for the Easter holidays in 2020. The volunteers will also support the event programme helping to deliver activities.

Heritage Research group – This group will be completing both desk and practical research into the original horticultural plan for Fairhaven Lake set out by Thomas Mawson in 1926. They will be investigating what original planting still exists and how it can be incorporated into the current plan for the site. The aim of this group is to set up a 'Mawson's Nursery' on site to trial planting that will fit in with the historic restoration of certain areas such as the Japanese gardens.

Survey and Monitoring Group - An essential part of the NLHF project will be ongoing consultation, survey and monitoring. The volunteers are being trained in skills to complete visitor surveys and consultation and also how to interpret results that will be fed into the NLHF monitoring of the project. The volunteers are supporting all pilot events that are ongoing through the project.

7.3 WIDER STAKEHOLDERS

It is well recognised that for any park to be successfully managed it must respond to the needs of the local community, and this means that a park service must actively engage and involve the local community in the development of the park or green space.

The key partner organisations involved with Fairhaven Lake and Gardens are representing user groups as follows:

- Friends of Fairhaven Lake & Gardens
- Ansdell in Bloom Trust

- RSPB
- Ribble Cruising Club
- Marine Bowling Club
- Blackpool Model Boat Club
- Fylde Scouts
- Fairhaven Lawn Tennis Club
- Fairhaven Cafe

The key stakeholders involved with the gardens are:

Group	Lead Member/s	Contact No. (where appropriate)
Friends of Fairhaven Lake & Gardens		
Lytham Heritage Group	Michael Kershaw	
Lancashire Gardens Trust	Elaine Taylor	
Ward Councillors	FBC Elected members	
Leisure & Tourism Committee Chair	Cllr Cheryl Little	
Police	Bryan Ward (community safety manager)	(01253) 658467
FBC Parks and Coastal Services Team	All Staff	(01253) 658658
FBC Tourism Team	Tim Dixon	(01253) 658436
Fairhaven Lakeside		(01253) 734527

Café		
FBC Technical Services	Darren Bell	(01253) 658675

These groups have all signed up to this Management and Maintenance plan and been actively involved in its production. The site management plan will be fully signed up by officers, gardeners, the community and elected members, through a series of meetings and consultation.

A Fairhaven partnership group has been formed, to ensure all stakeholders are kept up to date with the NLHF project and are all working together for the overall benefit of the park.

7.4 APPROPRIATE PROVISION FOR THE COMMUNITY

7.4.1 Consultation

Due to the number of past consultations a more targeted approach has been taken with the consultation for the NLHF project.

All stakeholder and user groups have been consulted, information such as current barriers and ambitions for growth have been covered to ensure that NLHF project at Fairhaven supports all the current clubs and gives opportunity to grow in both activity and participation numbers.

Public consultation events have focused on activity, these have provided information on what the current opinion of Fairhaven activity is and more importantly what activity would be supported for development. A range of activity has been highlighted for the NLHF team to focus on including the development of the water sport activity, an increase of wildlife and outdoor activity and outdoor performance and theatre. All of these options are incorporated into the NLHF activity and action plan.

It has been highlighted by audience research within an hour's drive that a wider audience demographic could be using the lake, so a consultation of non-user groups is being undertaken. This is a targeted process looking at education providers, young people, BAME groups, groups with health and special needs, people from deprived areas and special interest groups. We are looking to establish the barriers to why they are not currently using Fairhaven Lake and what facilities, activity or infrastructure would need to be put in place for them to become lake users.

Examples of the consultation materials are available on request.

7.4.2 Monitoring and Review

It will be necessary to review the plan on a regular basis.

The NLHF project has appointed external evaluation consultants to annually review the projects progress, looking at capital works, audience development, volunteer and community involvement. The year 1 report is available on request.

Marketing & Communication

8.1 GENERAL

Lytham and St. Annes are major tourist attractions for visitors to the Fylde Coast and the North West. The Council actively markets Fairhaven Lake as a tourist attraction, as it is situated directly between the two, on the coast, to provide a quality of life and boost the local economy, as set out in the corporate plan.

Fairhaven Lake and Gardens provides a tremendous marketing opportunity that has still to be realised. It has the potential to become a major visitor centre attraction, together with the Ribble Estuary and the RSPB Ribble Discovery Centre, which is based in the heart of the site, and is an educational destination in its own right, attracting around 52,000 visitors per year. This is likely to increase significantly should the Ribble Estuary become a Regional Park.

It is the aim of the Council to provide and encourage the best use of Fairhaven Lake to meet the leisure needs of residents and visitors to the borough through:

- Providing opportunities for informal leisure activities and promote conservation within the site
- Providing a safe and attractive environment for play and recreation within the appropriate British Safety Standards and other relevant national and European legislation, as these become law
- Developing links with voluntary organisations
- Coordinating tourism matters to help economic development throughout the site
- Providing disabled access

- Providing a range of catering in our facilities to meet customer's needs
- Motivating and encouraging people to take part in recreational activities within the site by creating opportunities for those who are not currently participating
- Set charges for recreational activities that ensure inclusiveness for the whole community

8.2 INFORMATION AND VISITOR MANAGEMENT

The area of Lytham St. Annes is a focus for visitors from far and wide who come to enjoy this traditional coastal village. Lytham's landmark windmill, displayed on the green, is just a glimpse of the heritage, which lies within Lytham. Lytham Green an attraction in itself and Fairhaven's close proximity to the Green means that visitors are very well catered for and the lake and gardens are always busy.



Objectives of Publicity

- Inform existing customers
- Attract new customers
- Develop and maintain loyalty
- Stimulate enquiries

This is achieved in a number of ways. We will:

Ensure that Fairhaven Lake is included in the Council's Marketing Strategy
 Constantly update the dedicated Fairhaven Lake page on the Council website Discover Fylde. It will include information including:

- Facilities
- Activities
- Events
- Current management and maintenance plan

- Provide information on and links to Partners

We will also:

- Design and produce a Fairhaven Lake leaflet
- Write at least six articles a year to go into local newspapers, internal bulletins or other local marketing media
- Work towards all signage being part of a corporate style that is relevant to the site, it must be informative and educational
- All Fairhaven events and activities are advertised through the Fairhaven Restoration social media platforms.
- Install two community display cabinets in the gardens at prominent points to house information from the Friends Group and the wider stakeholder group including events, minutes and important contact details
- Ensure that the gardens always flies at least two 'Green Flags' with pride, with the aim of having a flag at each entrance. Flag poles will be kept clean and in good working condition
- Provide interpretation for the Green Flags and the Green Flag Scheme

8.3 MARKETING METHODS

Marketing Activity	Audience	Message	Frequency
Notice boards	Current and potential visitors to the Fylde area	Detail forthcoming events	As and when new items for publication
Events	Fylde residents, visitors and Fairhaven Lake And Gardens Group	Events and activities to provide quality of life for residents and boost local economy	Annual events – Classic Boat Rally, etc
Promotional brochures	Entries in the Fylde mini guide	Details of the gardens	Published Annually
Promotional leaflets and videos	Fylde residents and visitors www.discoverfylde.co.uk/promo	Brochure style leaflet promoting quality of gardens and range of events.	Leaflets have been produced and will be distributed prior to the season.
Press activity	Fylde residents and visitors. Regional, local and specialist press. Internal FBC publications	Promoting the gardens. Linked to awards such Green Flags and new features.	As and when
Web site	All visitors to: www.fylde.gov.uk	Dedicated Fairhaven Lake page Information on the gardens and the lake events. Also	Updated weekly.

	www.vistitlancashire.com www.greenflagaward.org.uk www.discoverfylde.co.uk	online booking facility via the homepage.	
Website	www.facebook.com http://twitter.com	Information on Fylde Council, events, links to websites, news and notifications	Updated daily
Social media	Fylde residents and tourists/day visitors	Updates on the project progress, advertising volunteer opportunities, event and activity promotion.	3 posts per week

8.4 DISTRIBUTION OF MARKETING MATERIALS

- The gardens are mentioned in the tourist guides for the area
- Press realises have been to all local communities via both free press and recognised local newspapers

8.5 TARGET AUDIENCE

Our existing audience is summarised below:

Internal

- FBC Staff

External

- Local residents
- Local schools
- Community organisations
- Youth groups
- Visitors
- Non-users and hard to reach groups

Stakeholders

- Elected Members
- Friends of Fairhaven Lake & Gardens
- Ansdell in Bloom

Management

9.1 Clearly Addressing Green Flag Criteria in Management Prescriptions

The Fairhaven Lake & Gardens Management Plan and our longstanding partnerships with local stakeholders demonstrates Fylde Council's commitment to ensuring the appropriate and quality management of the site and encompassing services, addressing the criteria within the Green Flag Award scheme. The criteria also provides the method for self-assessment. Performance targets are to be set in the production and future revision of this plan, ensuring its successful long- term application.

9.2 Management Plan Must be Actively Implemented and Reviewed

The Parks and Coastal Services Manager has overall responsibility for this plan. The Action Plan provides a clear set of actions against the aims and objectives listed within the Green Flag Criteria Evaluation. The plan also identifies those parties who need to be involved and consulted. These actions are set against clear time scales and will ensure developments are completed in a professional, logical and organised manner. The plan is reviewed annually, and judge's feedback is reflected within the document.

9.3 Sound Financial Management

It is anticipated that a well-managed and promoted park will enjoy a significant increase in visitors. The increase in usage of the park will impact on the likely life expectancy of certain items of infrastructures such as footpaths, buildings, furniture, children's play equipment, and other artefacts within the park. The value and benefits of an upgraded park will only be upheld if sufficient budgets are allocated and Fairhaven Lake & Gardens is properly resourced. The proper funding of development and maintenance will ensure its long-term future success. A site-specific budget has been ring fenced for the park and

the Parks and Coastal Services Manager programmes annual works accordingly and to priority.

SECTION 10. ACTION PLAN

Proposals/Actions	Responsible	Funding Source	Target Date	Progress
A Welcoming Place				
Develop Park Welcome centre	NLHF Team	NLHF budget	May 2021	
Install site maps	Parks development	Revenue budget	April 2021	
Install main noticeboard	Parks development	Revenue budget	April 2021	
Create new circular pathway	NLHF team	NLHF budget	April 2021	
Incorporate Mawson's lookout into the masterplan	NLHF team	NLHF budget	April 2021	
Healthy, Safe & Secure				
Carry out public consultation on BBQ's & open fire use	Parks development	Revenue budget	Aug 2018	Complete
Collate BBQ consultation results	Parks development	Revenue budget	Sep 2018	Complete
Implement actions from the outcome of the BBQ consultation	Parks operations	Revenue budget	2018-2020	ongoing
Submit funding bid for building facilities & usage	Sports development & NLHF team	NLHF & Sports England	May 2021	
Develop funding bid for water sport activities	Sports development & NLHF team	NLHF	May 2021	
Prepare & evaluate tender	Parks development &	Revenue budget	Nov- Dec	Complete

documents for new adventure play area	NLHF team		2019	
Project manage the installation of new adventure play area	Parks development/NLHF team	Grant funding	Jan – Mar 2020	
Remove old junior play area	Parks operations	Revenue budget	Sept 2020	
Refurbish of motorboat engines	Parks operations	Revenue budget	Apr 2018	Complete
Refurbishment of 2 wooden heritage motorboats	NLHF team and parks operations	NLHF budget	April 2020	
Improvements to tennis court surfaces	NLHF & LTA	NLHF & LTA	April 2021	
Refurbish bowls hut	Technical services	Revenue budget	Apr 2018	Complete
Refurbish café building	NLHF team	NLHF budget	April 2021	
Carry out play area audit	Parks development	Revenue budget	Sep 2019	Complete
Prepare & submit capital bid to refurbish existing play areas	Parks management		Dec 2019	Complete
Prepare & evaluate tender documents for adventure golf	NLHF team	Revenue budget	Dec 2019 - Jan 2020	Complete
Project manage installation of adventure golf	NLHF team	Capital budget	July 2020	
Well Maintained & Clean				
Re paint white lines around the lake	Parks operations	Revenue budget	2018	

Repaint & fix the flagpole at main entrance	Parks operations	Revenue budget	2018	
Establish new team as per HLF structure	NLHF team	Revenue budget	Phased starting April 2021	
Research Mawson's planting plan for planting choices	Parks development & Friends group	Revenue budget	2018 – 2020	Complete
Audit bin provision and recycling facilities	Parks development	Revenue budget	Mar 2019	Complete
Relocate existing compost bays	NLHF team	NLHF budget	April 2021	
Carry out phased path repairs	Parks operations	Revenue budget	Mar 2018 – Sep 2020	
Workshop & depot safety inspections	Parks operations	Revenue budget	Ongoing	
Carry out structural survey on bridge at far end of lake	NLHF team	Revenue budget	Sep 2018	Complete
Carry out recommended repairs to the bridge	Parks development	Revenue budget	Mar 2019	Complete
Implement dog PSPO orders	All staff	Revenue budget	Ongoing	
Replace boards around bowling greens	Parks operations	Revenue budget	Apr 2021	

Carry out remedial tree work around the parks	Parks operations	Revenue budget	Mar 2019	Complete
Environmental Management				
Continue to reduce reliance on chemical use	All staff	Revenue budget	Ongoing	
Sustainable propagation in community nursery	NLHF and parks team	NLHFHLF budget	April 2021	
Biodiversity, Landscape & Heritage				
Develop & submit development stage of NLHF bid	NLHF Team	NLHF budget	Aug 2018	Complete
Develop landscape masterplan for gardens	NLHF team & Parks development	NLHF & revenue budget	Aug 2018 – Sep 2020	Complete
Improvements to RSPB building to create heritage welcome centre	NLHF team	NLHF budget	April 2021	
Restore Japanese garden	NLHF team	NLHF budget	April 2021	
Arrange & hold a Regatta Day	NLHF team	NLHF budget	Sep 2019	Complete
Community Involvement				
Develop ranger activities & classroom facilities for school use	NLHF team & ranger service	NLHF budget	April 2021	
Develop heritage education programme for schools, community	NLHF team	NLHF Budget	June 2020	

groups and families				
Hold cultural exhibitions as per activity plan	NLHF team	NLHF budget		
Deliver annual event plan as per NLHF activity plan	NLHF team, FOFL, Rangers	NLHF budget	ongoing	
Carry out wildflower planting as part of community action day	NLHF team & parks operations	Revenue budget	May 2019	Complete
Develop forest school base on large island. Tree clearing, build jetty, build activity facilities	Parks ranger services & NLHF team	NLHF budget	April 2021	
Formalise a Park Charter for all groups	NLHF team & parks development	Revenue budget	April 2020	
Create Fairhaven partnership group	NLHF team, all onsite clubs and businesses	NLHF Budget	April 2020	
Attract and develop new clubs and partnerships onsite	NLHF team	NLHF Budget	April 2021	
Launch volunteer Park Ambassador scheme	NLHF team	NLHF budget	April 2020	
Develop community nursery area	NLHF team & parks development	NLHF & revenue budget	Apr 2019 – Mar 2020	
Deliver health walks & buggy walks	Sports development	Revenue budget	Jan 2019 –	Complete

around the park			Dec 2019	
Update Activity Plan for 2020	NLHF team	NLHF budget	Dec 2019	Complete
Arrange to hold a Sport Relief event	Sports development & Parks operations	Revenue budget	Mar 2018	Complete
Marketing & Communication				
Continue to update the Councils websites & social media	Tourism service	Revenue budget	Ongoing	
Develop a Fairhaven brand	NLHF team	NLHF budget	Mar 2021	
Develop and maintain Fairhaven social media platforms (Facebook and Twitter)	NLHF team	NLHF Budget	ongoing	
Develop Fairhaven website	NLHF team	NLHF budget	June 2020	
Develop self-led education heritage material	NLHF team	NLHF budget	June 2020	
Develop a new Fairhaven 'app' & live interpretation of the park	NLHF team	NLHF budget	Mar 2021	
Appoint new Tourism Officer	Tourism service	Revenue budget	July 2019	Complete

Appendices

Appendix A

Health & Safety Data

A.1 RA forms issued to operational staff, completed annually

FYLDE COUNCIL RISK ASSESSMENTS

GM GC1	GRASS CUTTING using Gang Mowers
GM GC2	- Ride On Mowers
GM GC2A	- Ride On Mowers on bankings
GM GC3	- Pedestrian Mowers
GM GC3A	- Pedestrian Mowers on bankings
GM GC4	- Strimmers
GM GC4A	- Strimmers on bankings
GM MT1	MANUAL TASKS – Manual Handling
GM MT2	Use of Ladders
GM MT5	Mixing/spraying Pesticides
GM MT6	Litter Picking
GM MT7	Ponds and watercourses
GM TW1	TRACTOR WORK - general
GM TW1A	Whole Body Vibration
GM TW2	Using Tractor implements
GM TW3	Using Tractor Mounted Bowser
GM TW4	Using Trailers
GM TW5	Using Tractor Loader
GM TW6	Affixing/dismantling Tractor Loader/Bucket
GM P1	PERSONNEL - Young People in Work Place
GM P2	Disabled People in the Work Place
GM P3	Workers with Poor Hearing
GM SP1	SMALL PLANT - General
GM SP2	Using Air Brooms
GM SP3	Using Hedge Trimmers
GM SP4	Using Chainsaws
GM SP5	Using Shredders/Chippers
GM SP7	Using Rotavators
GM SP8	Using Water Pumps
GM SP9	Using Hand Held Machinery – Vibration White Finger
GM SP10	Using Weed Burners
GM SP11	Noise at Work
GM SP12	Using a pressure washer
GM VO1	VEHICLE OPERATION
GM VO2	Transport of Machinery/Fuel/Materials
GM VO3	Fuel Storage
GM VO4	Fuel Transportation
GM VO5	Using transport during/for the work activity
GM D1	USE OF DEPOT FACILITIES – mess rooms, toilets & stores
GM D2	Operational use of depots and car parks
GM D3	First aid needs assessment
GM D4	Glasshouse & polytunnels

A.111

All staff have undertaken IOSH working safely training this year and many have had first aid and manual handling refreshers.

Further details are available on request.

Period Work Schedule : Period J8

Fairview Lake Trail

All Assets (non-contract specific)

Asset ID	Asset Name	Asset Type	Category	Cost	Unit	Frequency	Days	Time	Total Completed
2 Ansdell									
Fairview Lake									
AD23	Bank Spring Bedding / Hnt	AD	3	11	70.00	m2			W1 W2 W3 W4
AD33	Bedding Hard Wood / Hnt	AD	10	12	70.00	m2			
CL14	Empty Litter Box - Assembly Area	CL	1	14	40.00	ea			
CL16	Litter Compast Lays (Wedge)	CL	1	16	1.00	ea			
CL17	Litter Rack - gr. Ornamental Areas	CL	1	17	101,400.00	m2			
GC11	Grass - Mow Fine Spike Turf	GC	1	11	5,282.90	m2			
GC12	Grass - Mow Ornamental	GC	1	12	13,317.40	m2			
GC13	Grass - Mow Assembly	GC	1	13	19,402.00	m2			
GC14	Grass - Mow Grass Tennis Court	GC	1	14	5,282.90	m2			
GE11	Grass Edge - Ornamental L-S	GE	1	11	4,305.00	yr			
GE15	Grass Edge - Assembly Strip	GE	1	15	2,703.00	yr			
HB11	Maintenance Map (Wood, Stake & ...)	HB	1	11	284.00	yr			
HD11	Trim Hedge - Ornamental	HD	1	11	728.00	yr			
RE11	Remove Dead Hedge 5 Rows on 8 sides	RE	1	11	245.00	m2			
RE17	Roses - Cultivate & 1 and Weed	RE	1	17	145.00	m2			
SE20	Shrub - Prune & Cultivate Ornamental	SE	1	20	972.00	m2			
TC01	Tennis - Maintain/Remove Weekly	TC	1	1	21,925.00	hr			
TC05	Clear Leaves Off Paths Daily	TC	1	5	600.00	m2			
TM101	Seal/Fill Fine Spike Turf	TM	1	101	5,282.90	m2			
TM102	Install Fine Line Spike Turf	TM	1	102	5,282.90	m2			
TM104	Topdress Fine Spike Turf	TM	1	104	5,282.90	m2			
TM108	Install Fine Line Spike Turf	TM	1	108	5,282.90	m2			
TM110	Install Fine Line Spike Turf	TM	1	110	5,282.90	m2			
TM112	Install Fine Line Spike Turf	TM	1	112	5,282.90	m2			
Grenadies Bay									
AD10	Bank Pick Ornamental Areas	AD	1	10	10,801.80	m2			W1 W2 W3 W4
GC13	Grass - Mow Assembly	GC	1	13	135.90	m2			
GE15	Grass Edge - Assembly Strip	GE	1	15	185.20	m			
TC007	Tennis - Seal/Fill/Install	TC	1	7	185.20	m2			

Appendix C. Proposed Activities & Event Schedule 2020/21

Date	Time	Event	Type of Event
Feb			
04.02.20	9.30-11.30	walk kick off day	guided walk and
March			
03.03.20	9.30-10.30	Buggy Walk	guided walk
07.03.20	9.30-10.30	Wellness Walk	guided walk
14.03.20	10.00-12.00	Heritage walk	guided walk
19.03.20	13.00-15.00	Comm action Day	Spring clean beds
TBC		Spot On Theatre performance	adult production
April			
04.04.20	9.30-10.30	Wellness Walk	guided walk
07.04.20	9.30-10.30	Buggy Walk	guided walk
4-19.04.20	All day	Heritage trail	self led trail- heritage based
14.04.20	1-3pm	Spring event	mini beast etc
19.04.20	1-3pm	Fam Heritage	boat race event
May			
02.05.20	9.30-10.30	Wellness Walk	guided walk
02.05.20	5.30am	Dawn Chorus event	adult learning session
05.05.19	9.30-10.30	Buggy Walk	guided walk
14.05.20	10.00-12.00	Heritage Walk	guided walk
24.05.19	11-4pm	Open Day	sports/leisure showcase
23-31.05.20	all day	Spring Trail	spring trail (RSPB)
30.05.20	1-3pm	Comm action Day	wildflower seed bombs
June			
02.06.20	9.30-10.30	Buggy Walk	guided walk
06.06.20	9.30-10.30	Wellness Walk	guided walk
16.06.20	13.00-16.00	Shoreline Safari	adult learning session (sand dune & saltmarsh ID)
13.06.20	10.00-12.00	Photography Workshop	adult learning LSAPS
28.06.20	13.00-15.00	Fam Heritage	sandcastle comp
July			

04.07.20	9.30-10.30	Wellness Walk	guided walk
07.07.20	9.30-10.30	Buggy Walk	guided walk
08.07.20	14.00-16.00	Heritage walk	guided walk
19th	11-4pm	Big Picnic	fofl event
30.07.20	10-12noon	Seaside Orienteering	self led orienteering
TBC		Public water sports	kayak/canoe
August			
01.08.20	9.30-10.30	Wellness Walk	guided walk
04.08.20	9.30-10.30	Buggy Walk	guided walk
11.08.20	1-3pm	Beachcraft	fires/muddip
20.08.20	13.00-15.00	Fam Heritage	games/kites
22.08.20	8.30pm	Bat walk	rspb bat weekend
Sept			
19.09.20	10.00-16.00	Heritage Open Day	Display/activity at Town Hall open day
Oct			
TBC		Work in progress tour	
Nov			
TBC		Work in progress tour	
Dec			
TBC		Work in progress tour	